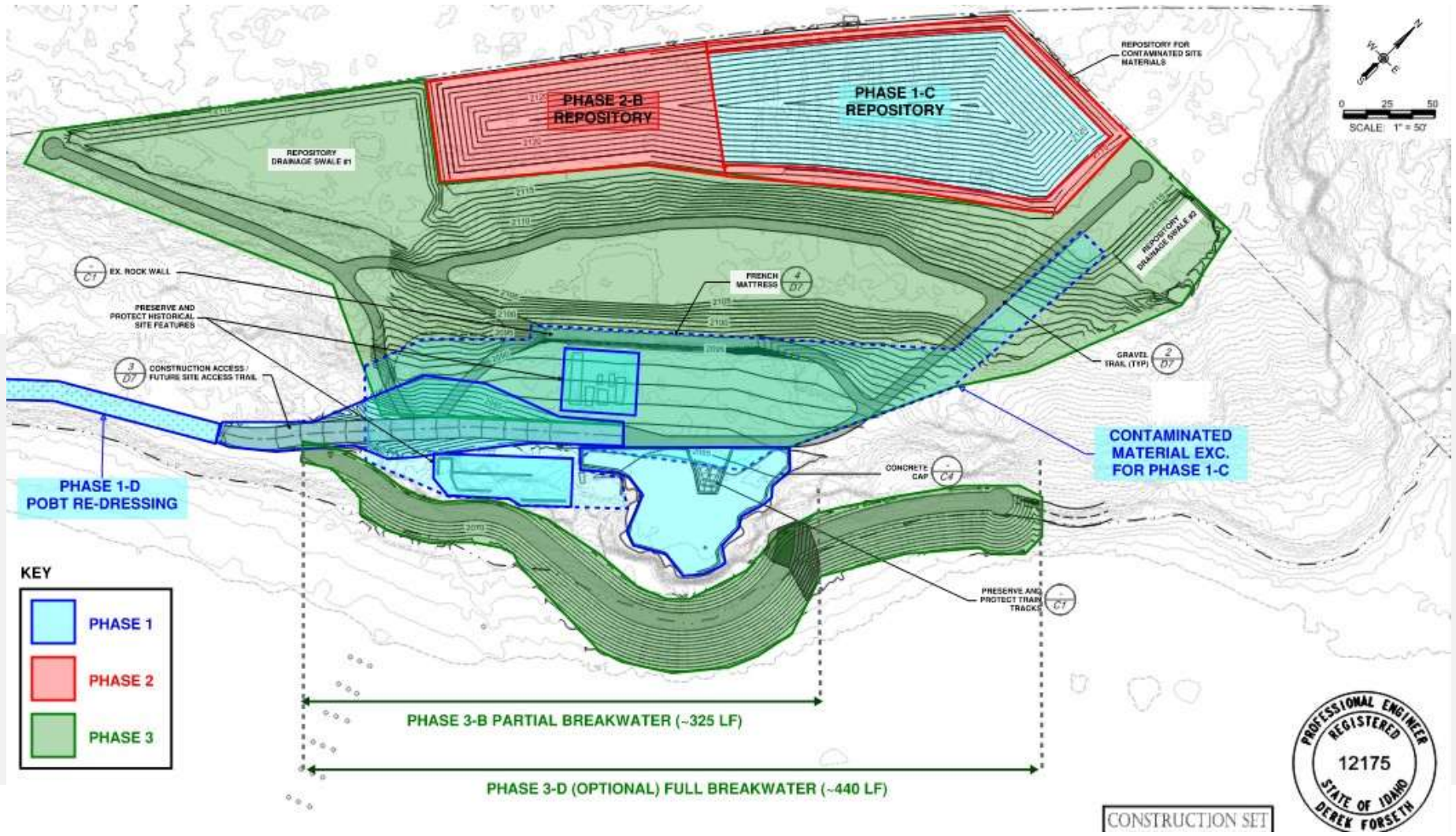


PROJECT PHASING OVERVIEW

PRE-CONSTRUCTION MEETING

FORMER PANHANDLE SMELTING & REFINING SITE REMEDIATION AND LAKESHORE ENHANCEMENT

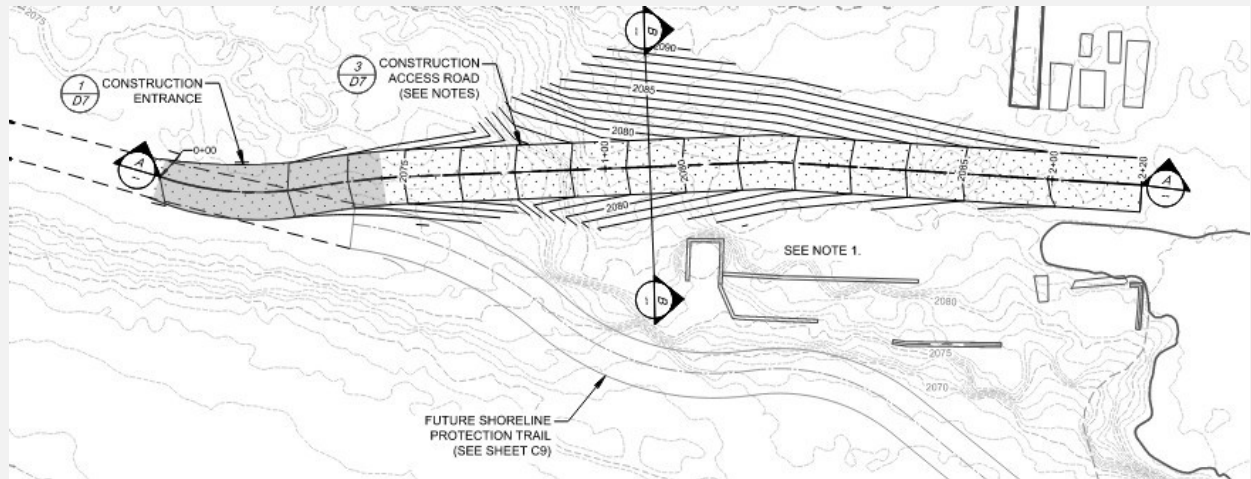


PHASE 1

PRE-CONSTRUCTION MEETING

FORMER PANHANDLE SMELTING & REFINING SITE REMEDIAATION AND LAKESHORE ENHANCEMENT

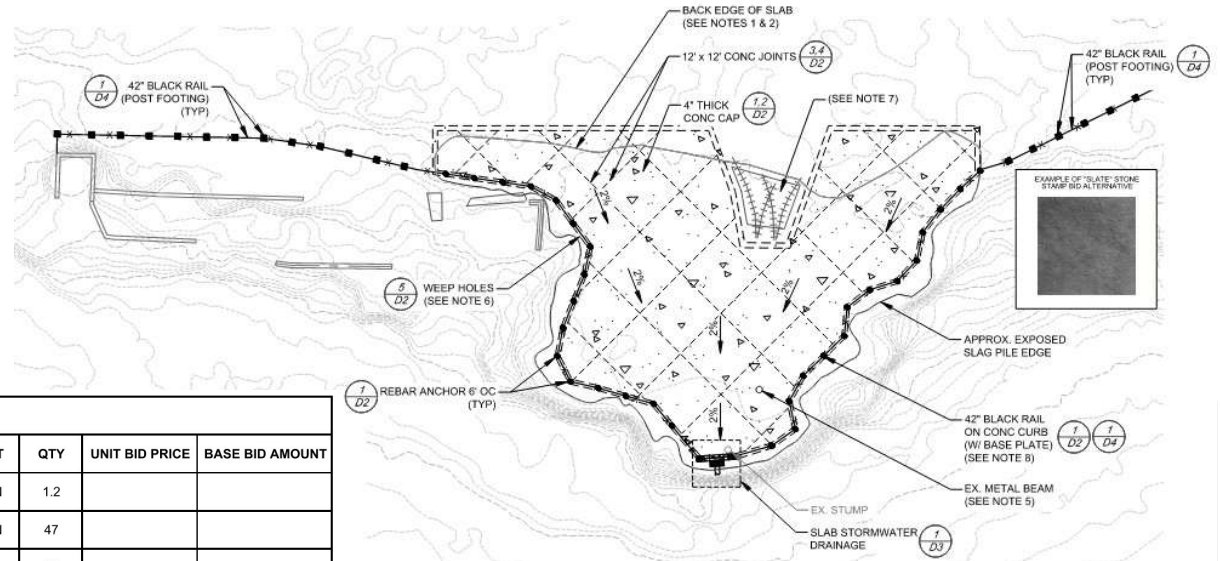
PHASE 1-A TEMPORARY CONSTRUCTION FACILITIES AND CONTROLS, CLEARING AND GRUBBING						
ITEM NO.	SPEC REFERENCE*	DESCRIPTION	UNIT	QTY	UNIT BID PRICE	BASE BID AMOUNT
1	015000-01	MOBILIZE/DEMobilIZE	LS	1		
2	015000-02	SITE CONTROLS	LS	1		
3	015000-03	TEMPORARY TRAFFIC SIGNS (30" x 30" REFLECTIVE)	EA	8		
4	015000-04	TEMPORARY RESTRICTED ACCESS SIGNS	EA	4		
5	015719-01	TEMPORARY EROSION AND SEDIMENT CONTROL BMP's (SILT FENCING, ETC.)	LS	1		
6	311000-01	CLEARING AND GRUBBING (INCLUDING DISPOSAL)	AC	3.1		
7	310000-01	EARTHWORK AND GRADING (CONSTRUCTION ENTRANCE/EXIT)	CY	300		
8	310519.13-01	GEOTEXTILE (8 OZ NON-WOVEN)	SY	300		
9	321500-03	FRACTURED ROCK (2" TO 8" DIA.)	TON	22		
BID SUBTOTAL						



PHASE 1

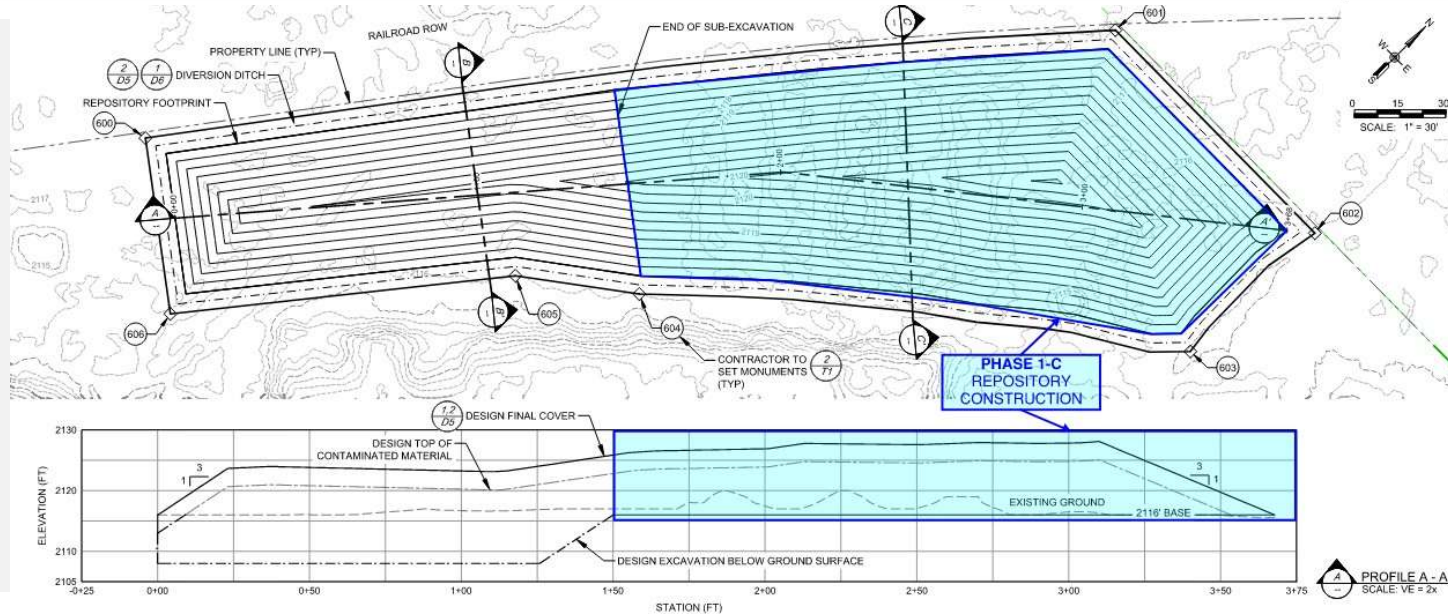
PRE-CONSTRUCTION MEETING

FORMER PANHANDLE SMELTING & REFINING SITE REMEDIAION AND LAKESHORE ENHANCEMENT



PHASE 1-B		BLACKROCK CAP				
ITEM NO.	SPEC REFERENCE*	DESCRIPTION	UNIT	QTY	UNIT BID PRICE	BASE BID AMOUNT
1	321120-02	PEA GRAVEL	TON	1.2		
2	321120-01	1/2" MINUS AGGREGATE	TON	47		
3	310519.13-01	GEOTEXTILE (8 OZ NON-WOVEN) - FOR BLACKROCK	SY	62		
4	050520-01	POST INSTALLED REBAR ANCHORS	EA	34		
5	033000-01	CONCRETE (4" SLAB, 4500 PSI, DYED BLACK, CONTROL JOINTS, BROOM FINISH)	CY	64		
6	033000-02	#3 REBAR REINFORCEMENT	LF	7140		
7	033000-03	STONE STAMP FINISH	SY	480		
8	055013-01	PRECIPITATION CATCH BASIN	LS	1		
9	050520-02	3/8" POST INSTALLED ANCHORS FOR BLACKROCK DRAINAGE PIPE	EA	4		
10	331100-01	4" SCH 40 GALVANIZED STEEL PIPE AND FITTINGS	LF	12		
11	055200-01	42" BLACK RAIL FENCE	LF	318		
BID SUBTOTAL						

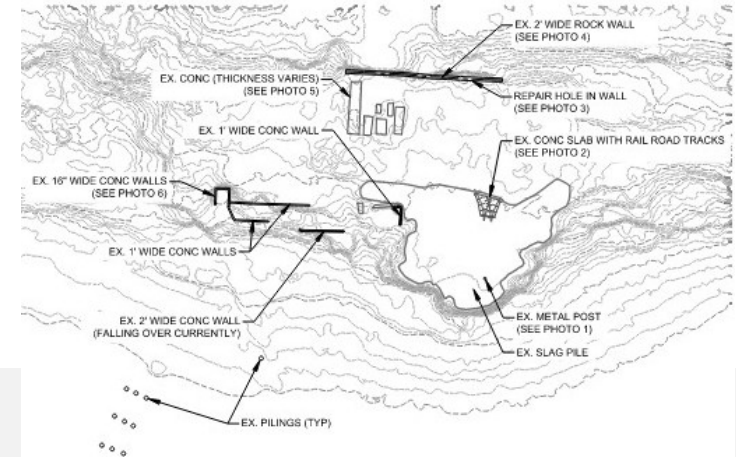
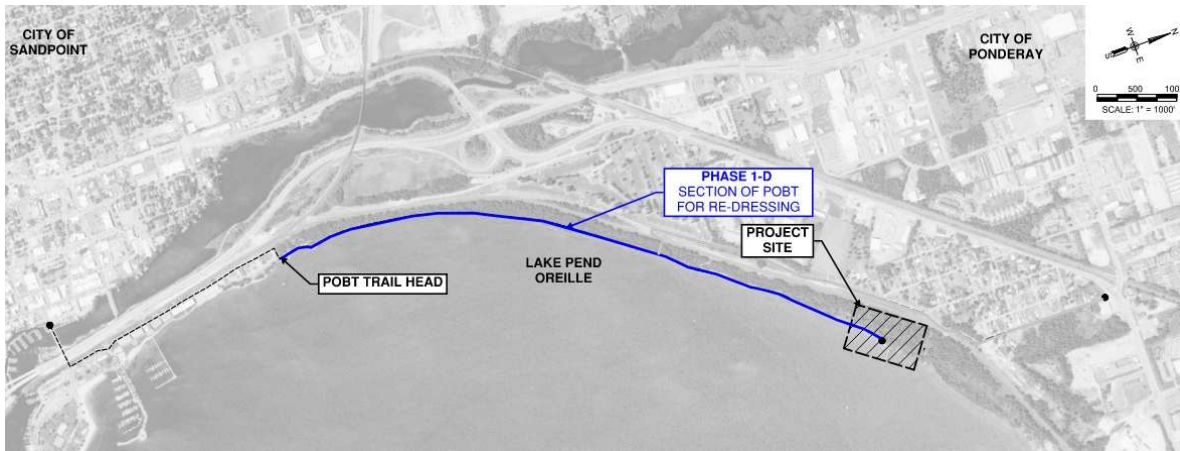
PHASE 1-C EXCAVATION OF CONTAMINATED MATERIAL, REPOSITORY CONSTRUCTION (ROASTERY HALF ONLY)						
ITEM NO.	SPEC REFERENCE*	DESCRIPTION	UNIT	QTY	UNIT BID PRICE	BASE BID AMOUNT
1	026613-01	COVER SOIL, BORROW (PLACE AND COMPACT ON SITE)	CY	510		
2	026613-03	IMPORTED TOPSOIL (SITE)	TON	250		
3	310000-02	EXCAVATE CONTAMINATED MATERIAL AND PLACE IN REPOSITORY (ON ROASTERS)	CY	1050		
4	311100-02	SELECT WASTE DEBRIS REMOVAL AND DISPOSAL	TON	1.5		
BID SUBTOTAL						



PHASE 1

PRE-CONSTRUCTION MEETING

FORMER PANHANDLE SMELTING & REFINING SITE REMEDIAION AND LAKESHORE ENHANCEMENT



PHASE 1-D IMPROVE POBT FOR ACCESS, CLEANUP HISTORIC FEATURES, WASHWATER CONTROL						
ITEM NO.	SPEC REFERENCE*	DESCRIPTION	UNIT	QTY	UNIT BID PRICE	BASE BID AMOUNT
1	015719-03	FIBER ROLLS	LF	1210		
2	024291-01	EXISTING STONE WALL - HOLE REPAIR	LS	1		
3	024291-02	POWER WASH CONCRETE FEATURES	LS	1		
4	321500-02	AGGREGATE SURFACING, RE-DRESS POBT (3/4" MINUS)	TON	940		
BID SUBTOTAL						

PHASE 2

PRE-CONSTRUCTION MEETING

FORMER PANHANDLE SMELTING & REFINING SITE REMEDIATION AND LAKESHORE ENHANCEMENT

PHASE 2-A TEMPORARY CONSTRUCTION FACILITIES AND CONTROLS				
ITEM NO.	SPEC REFERENCE*	DESCRIPTION	UNIT	QTY
1	015000-01	MOBILIZE/DEMobilIZE	LS	1
2	015000-02	SITE CONTROLS	LS	1
3	017800-01	AS-BUILT SURVEY	LS	1

PHASE 2-B EXCAVATION OF CONTAMINATED MATERIAL, COMPLETION OF REPOSITORY CONSTRUCTION				
ITEM NO.	SPEC REFERENCE*	DESCRIPTION	UNIT	QTY
1	025613.19-01	GEOSYNTHETIC CLAY LINER (GCL)	SF	34900
2	026613-01	EXCAVATE AND STOCKPILE CLEAN BORROW	CY	2700
3	026613-02	COVER SOIL, BORROW (PLACE AND COMPACT ON REPOSITORY)	CY	1650
4	026613-03	IMPORTED TOPSOIL (REPOSITORY)	TON	130
5	026613-04	FINE GRAINED SOIL, BORROW (PLACE AND COMPACT ON REPOSITORY)	CY	770
6	310000-02	EXCAVATE CONTAMINATED MATERIAL AND PLACE IN REPOSITORY	CY	2550
7	311100-02	SELECT WASTE DEBRIS REMOVAL AND DISPOSAL	TON	1.5
8	313219.13-01	GEOCOMPOSITE LAYER	SF	34900
9	334616-01	4" PERFORATED DRAIN PIPE	LF	960
10	334616-03	WASHED AGGREGATE (3/4" MINUS)	TON	162
11	334616-02	DRAIN ROCK	TON	210

