

INDEPENDENT HIGHWAY DISTRICT

MCNEARNEY SHOP SITE

SEC. 02, T 57N, R 02W, BM.
BONNER COUNTY, ID

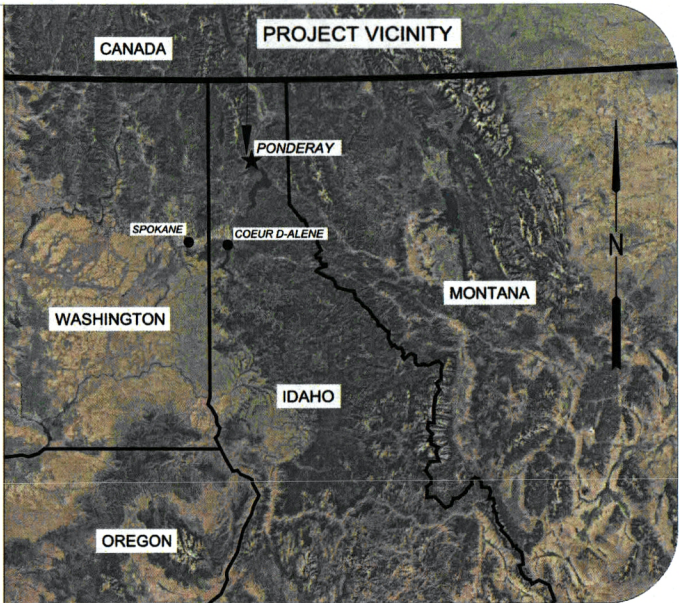


Know what's below.
Call before you dig.

OFFICIALS

CHAIRMAN: MEL BAILEY
COMMISSIONER: MARJ TILLEY
COMMISSIONER: BRIAN IVY
CLERK: JULIE BISHOP
ROAD SUPERVISOR: BRETT ENGEL

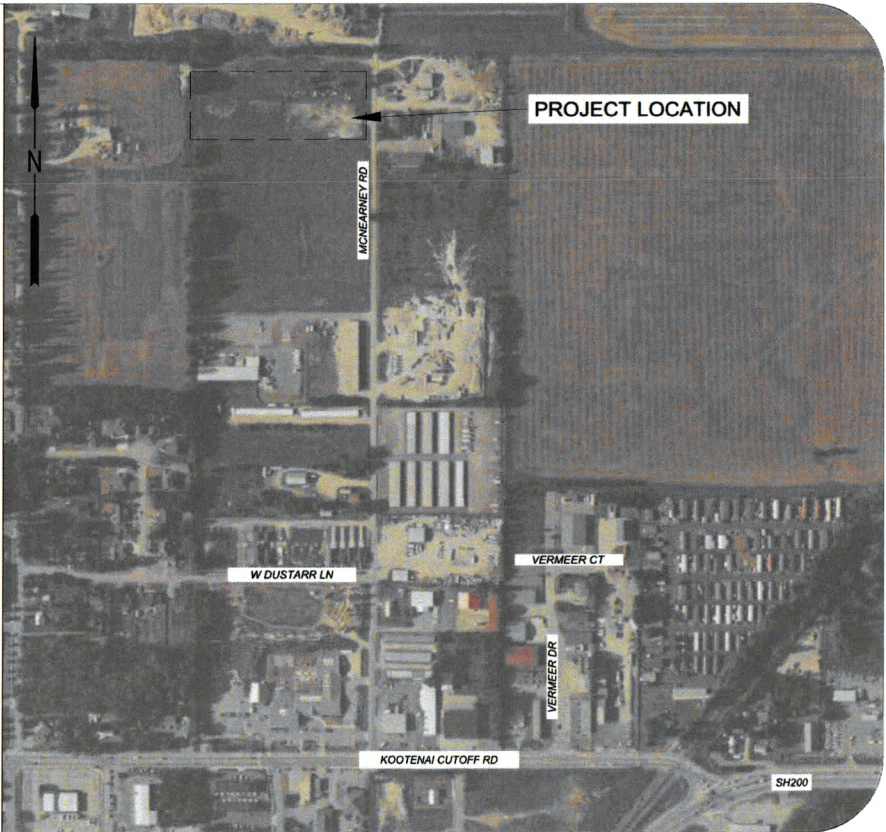
VICINITY MAP



LEGEND

PROPOSED WATER LINE --- W --- W ---
PROPOSED SANITARY SEWER LINE --- SS --- SS ---
PROJECT LIMITS --- ---
PROPOSED ELECTRICAL CONDUIT --- E --- E ---
WALL LIGHT Ⓢ

LOCATION MAP



SHEET INDEX

DWG	SHEET	TITLE
G-01	1	COVER
CP-01	2	SHOP SITE PLAN
CP-02	3	EROSION CONTROL PLAN
CP-03	4	DETAILS

RECEIVED
APR 03 2025
PLANNING OFFICE
CITY OF PONDERAY

REUSE OF DOCUMENTS

THIS DRAWING, AND THE DESIGNS INCORPORATED HEREIN, AS AN INSTRUMENT OF PROFESSIONAL SERVICE, IS THE PROPERTY OF CENTURY WEST ENGINEERING CORPORATION, AND IS NOT TO BE USED, IN WHOLE OR IN PART, FOR ANY OTHER PROJECT WITHOUT THE WRITTEN CONSENT OF CENTURY WEST ENGINEERING CORPORATION.

© CENTURY WEST ENGINEERING CORPORATION

PROFESSIONAL ENGINEER
REGISTERED
Digitally signed by Ryan
Luttmann
Date: 2025.03.28
11:33:42-07'00'

VERIFY SCALES
BAR IS ONE INCH ON
ORIGINAL DRAWING.
0" 1"
IF NOT ONE INCH ON
THIS SHEET, ADJUST
SCALES ACCORDINGLY.

NO.	DATE	BY	APPR	REVISIONS

CENTURY WEST
ENGINEERING

DATE:
MARCH 2025

SANDPOINT OFFICE
102 S EUCLID AVE, SUITE 107
SANDPOINT, IDAHO 83864
208.946.4380

PROJECT NO:
51015.001.01

DESIGNED BY:
RJL
DRAWN BY:
HFL
CHECKED BY:
RJL
SCALE:
NTS

INDEPENDENT HIGHWAY DISTRICT
MCNEARNEY SHOP SITE PROJECT

COVER SHEET

DRAWING NO.
G-01
SHEET NO.
1 OF 4



Know what's below.
Call before you dig.

NOTES:

1. REFER TO THE PROJECT STORM WATER MANAGEMENT PLAN REPORT FOR PLAN DEVELOPMENT DETAILS AND CALCULATIONS.
2. ELEVATIONS ARE BASED ON TOPOGRAPHIC SURVEY PREPARED BY GLAHE & ASSOCIATES DATED 06/14/2021.
3. LIGHTING FIXTURES BY OTHERS. TO BE DESIGNED WITH BUILDING.
4. ALL BUILDINGS, SHEDS, COVERED EQUIPMENT STORAGE, AND STORAGE FACILITIES TO BE DESIGNED BY OTHERS.

STORM WATER SUMMARY:

DESIGN STORM: 25 YR. 24 HR
IMPERVIOUS AREA: 110,275 SF

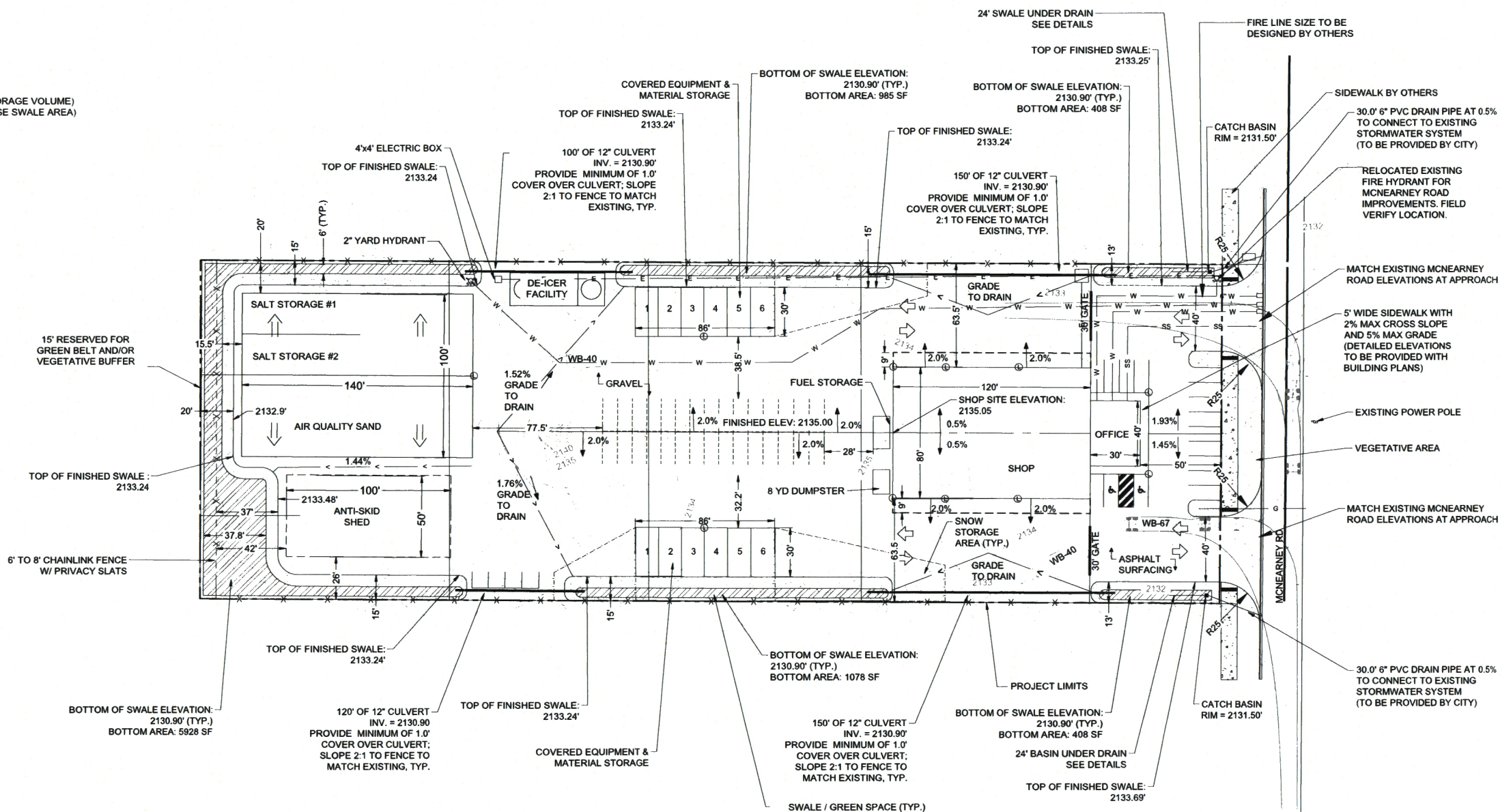
MINIMUM DESIGN SWALE REQUIREMENTS
IMPERVIOUS AREA X (0.5in/12in) = 4595 CF (MIN. STORAGE VOLUME)
VOLUME/7" DEPTH MAX = 8691 SF (MIN. BASE SWALE AREA)

TOTAL BASE SWALE AREA PROVIDED = 8807 SF

*SEE STORM MANAGEMENT REPORT

SURFACE DATA

LOT SIZE: 128,340 SF
SWALE AREA: 8807 SF
BUILDING AREA: 38,504 SF
GREEN SPACE: 14.1% (18076 SF)
BUILDING SPACE: 30.0%



RECEIVED

APR 03 2025

PLANNING OFFICE
CITY OF PONDERAY

REUSE OF DOCUMENTS

THIS DRAWING, AND THE DESIGNS INCORPORATED HEREIN, AS AN INSTRUMENT OF PROFESSIONAL SERVICE, IS THE PROPERTY OF CENTURY WEST ENGINEERING CORPORATION, AND IS NOT TO BE USED, IN WHOLE OR IN PART, FOR ANY OTHER PROJECT WITHOUT THE WRITTEN CONSENT OF CENTURY WEST ENGINEERING CORPORATION.

© CENTURY WEST ENGINEERING CORPORATION



VERIFY SCALES

BAR IS ONE INCH ON ORIGINAL DRAWING.
0" = 1"
IF NOT ONE INCH ON THIS SHEET, ADJUST SCALES ACCORDINGLY.

NO.	DATE	BY	APPR	REVISIONS



DATE: MARCH 2025

SANDPOINT OFFICE
102 S EUCLID AVE, SUITE 107
SANDPOINT, IDAHO 83864
208.946.4380

PROJECT NO: 61015.001.01

DESIGNED BY: RJL
DRAWN BY: HFL
CHECKED BY: RJL
SCALE: AS SHOWN

INDEPENDENT HIGHWAY DISTRICT
MCNEARNEY SHOP SITE PROJECT

IHD SHOP SITE PLAN

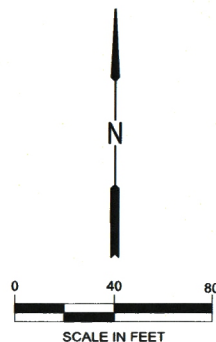
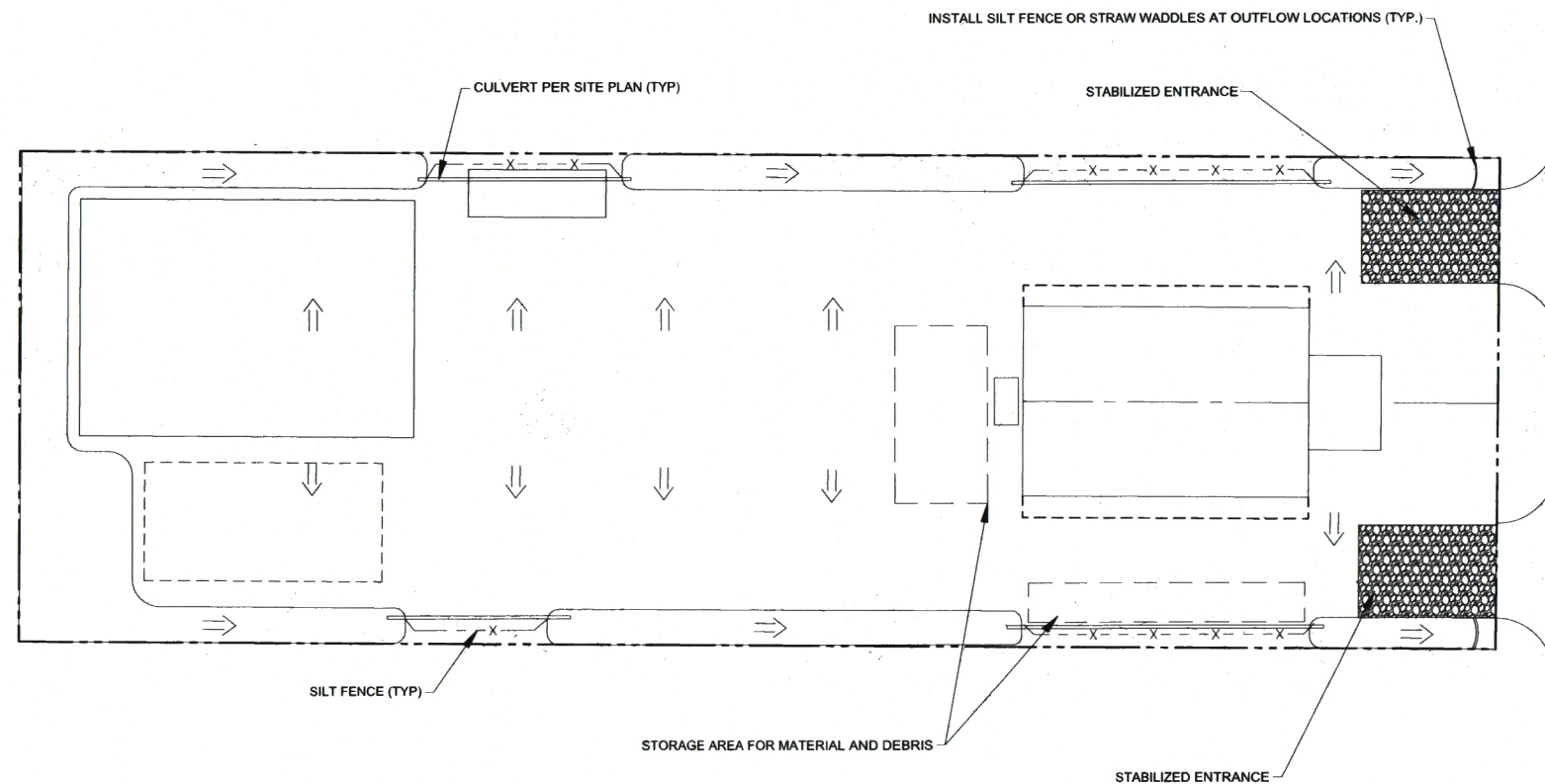
DRAWING NO.
CP-02
SHEET NO.
2 OF 4



Know what's below.
Call before you dig.

NOTES:

1. ALL BEST MANAGEMENT PRACTICES (BMP'S) WILL BE IN ACCORDANCE WITH IDEQ CATALOGUE OF STORM WATER BMP'S FOR IDAHO CITIES AND COUNTIES.
2. FOLLOWING INSTALLATION OF BMP'S SHOWN, IMMEDIATELY ROUGH GRADE SITE AND DRAINAGE SWALES TO FACILITATE GENERAL FLOW PATTERNS INDICATED.
3. IMPLEMENT DUST CONTROL MEASURES WHERE NEEDED TO PREVENT DUST FROM TRAVELING OFF-SITE.



RECEIVED

APR 03 2025

PLANNING OFFICE
CITY OF PONDERAY

REUSE OF DOCUMENTS

THIS DRAWING, AND THE DESIGNS INCORPORATED HEREIN, AS AN INSTRUMENT OF PROFESSIONAL SERVICE, IS THE PROPERTY OF CENTURY WEST ENGINEERING CORPORATION, AND IS NOT TO BE USED, IN WHOLE OR IN PART, FOR ANY OTHER PROJECT WITHOUT THE WRITTEN CONSENT OF CENTURY WEST ENGINEERING CORPORATION.

© CENTURY WEST ENGINEERING CORPORATION



VERIFY SCALES

BAR IS ONE INCH ON ORIGINAL DRAWING.
0" 1"
IF NOT ONE INCH ON THIS SHEET, ADJUST SCALES ACCORDINGLY.

NO.	DATE	BY	APPR	REVISIONS



SANDPOINT OFFICE
102 S EUCLID AVE, SUITE 107
SANDPOINT, IDAHO 83864
208.946.4380

DATE: MARCH 2025

PROJECT NO: 51015.001.01

DESIGNED BY:
R.J.L.
DRAWN BY:
H.F.L.
CHECKED BY:
R.J.L.
SCALE:
AS SHOWN

INDEPENDENT HIGHWAY DISTRICT
MCNEARNEY SHOP SITE PROJECT

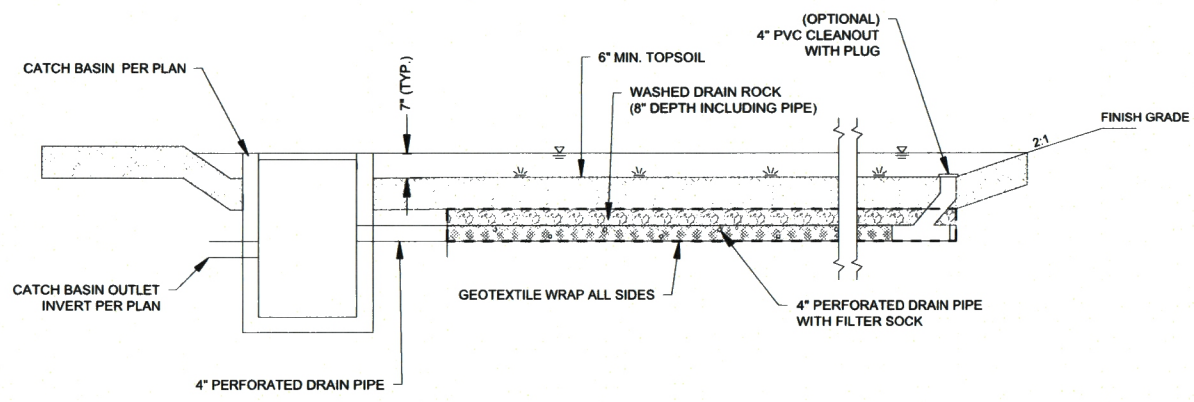
IHD EROSION CONTROL PLAN

DRAWING NO.
CP-02

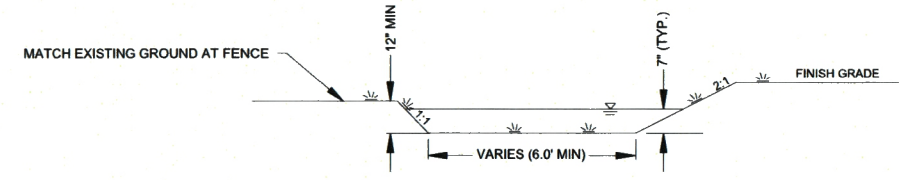
SHEET NO.
3 OF 4



Know what's below.
Call before you dig.



1 TYPICAL BASIN UNDER DRAIN
N.T.S.



2 TYPICAL SWALE CROSS-SECTION
N.T.S.

RECEIVED
APR 03 2025
PLANNING OFFICE
CITY OF PONDERAY

REUSE OF DOCUMENTS

THIS DRAWING, AND THE DESIGNS INCORPORATED HEREIN, AS AN INSTRUMENT OF PROFESSIONAL SERVICE, IS THE PROPERTY OF CENTURY WEST ENGINEERING CORPORATION, AND IS NOT TO BE USED, IN WHOLE OR IN PART, FOR ANY OTHER PROJECT WITHOUT THE WRITTEN CONSENT OF CENTURY WEST ENGINEERING CORPORATION.

© CENTURY WEST ENGINEERING CORPORATION

PROFESSIONAL ENGINEER
REGISTERED
[Signature]
Digital signed by Ryan
Date: 2025-03-28
11:35:29-07'00'

VERIFY SCALES
BAR IS ONE INCH ON ORIGINAL DRAWING.
0" 1"
IF NOT ONE INCH ON THIS SHEET, ADJUST SCALES ACCORDINGLY.

NO.	DATE	BY	APPR	REVISIONS



DATE:
MARCH 2025

SANDPOINT OFFICE
102 S EUCLID AVE, SUITE 107
SANDPOINT, IDAHO 83864
208.946.4380

PROJECT NO:
51015.001.01

DESIGNED BY:
RJL
DRAWN BY:
HFL
CHECKED BY:
RJL
SCALE:
NTS

INDEPENDENT HIGHWAY DISTRICT
MCNEARNEY SHOP SITE PROJECT

DETAILS

DRAWING NO.
CP-03
SHEET NO.
4 OF 4