

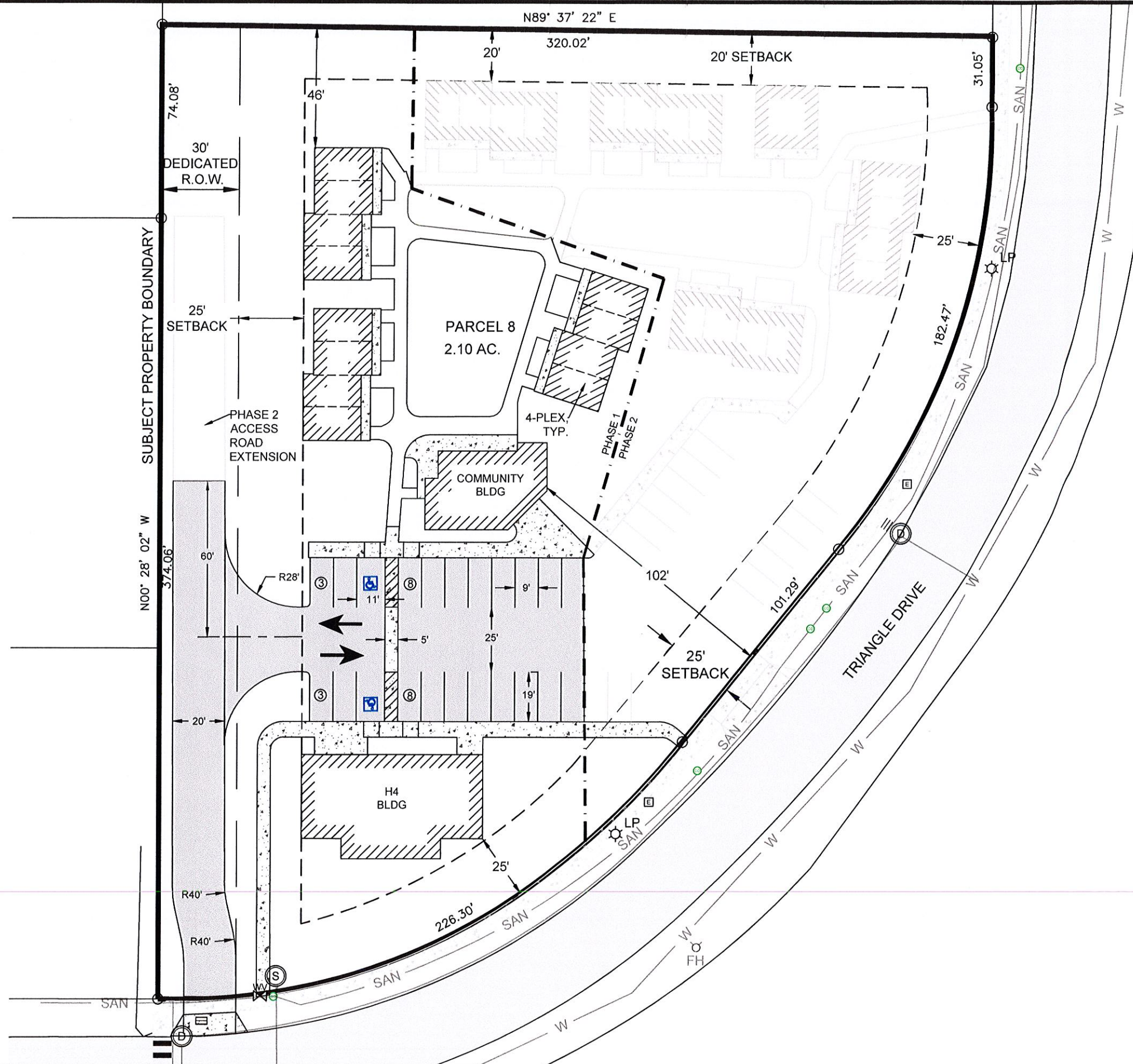
LOT SIZE = 2.10 AC.
EXISTING IMPERVIOUS AREA = 0.0 AC.

PHASE 1:
PROPOSED ADDITIONAL IMPERVIOUS AREA = 0.48 AC.
TOTAL IMPERVIOUS AREA = 0.48 AC.
OPEN SPACE = 1.93 AC. = 92%
GREEN SPACE = 1.62 AC. = 77%
EXISTING BUILDING FLOOR AREA = 0.0 SF = 0.0 AC.
NEW BUILDING FLOOR AREA = 7,271 SF = 0.17 AC.
TOTAL BUILDING FLOOR AREA = 0.17 AC.

PHASES 1 & 2 COMBINED:
PROPOSED ADDITIONAL IMPERVIOUS AREA = 0.85 AC.
TOTAL IMPERVIOUS AREA = 0.85 AC.
OPEN SPACE = 1.82 AC. = 87%
GREEN SPACE = 1.25 AC. = 59%
EXISTING BUILDING FLOOR AREA = 0.0 SF = 0.0 AC.
NEW BUILDING FLOOR AREA = 12,411 SF = 0.28 AC.
TOTAL BUILDING FLOOR AREA = 0.28 AC.

LIGHTING NOTES:
1. PROPOSED EXTERIOR LIGHTING CONSISTS OF DOWNWARD DIRECTED BUILDING MOUNTED LIGHTS. SEE ARCHITECTURAL PLANS FOR DETAILS.

LANDSCAPE NOTES:
1. ALL UNDEVELOPED AREAS WITHIN THE LIMITS OF DISTURBANCE SHALL BE HYDRO-SEEDED WITH NATIVE GRASS MIX UPON COMPLETION OF CONSTRUCTION. SEE ARCHITECTURAL PLANS FOR TREE AND SHRUB DETAILS.



PRELIMINARY
NOT FOR
CONSTRUCTION

PROJ. NO.	REVISION	DATE	BY	SHEET
CW163				C-2
DWN BY	NMC	7/2/2024		

GOOD SAMARITAN INN

CIVIL SITE PLAN

Clearwater Engineering, LLC

P.O. Box 2006
Post Falls, ID 83877
Phone: 406.690.5249
clearwatereng.idaho@gmail.com

