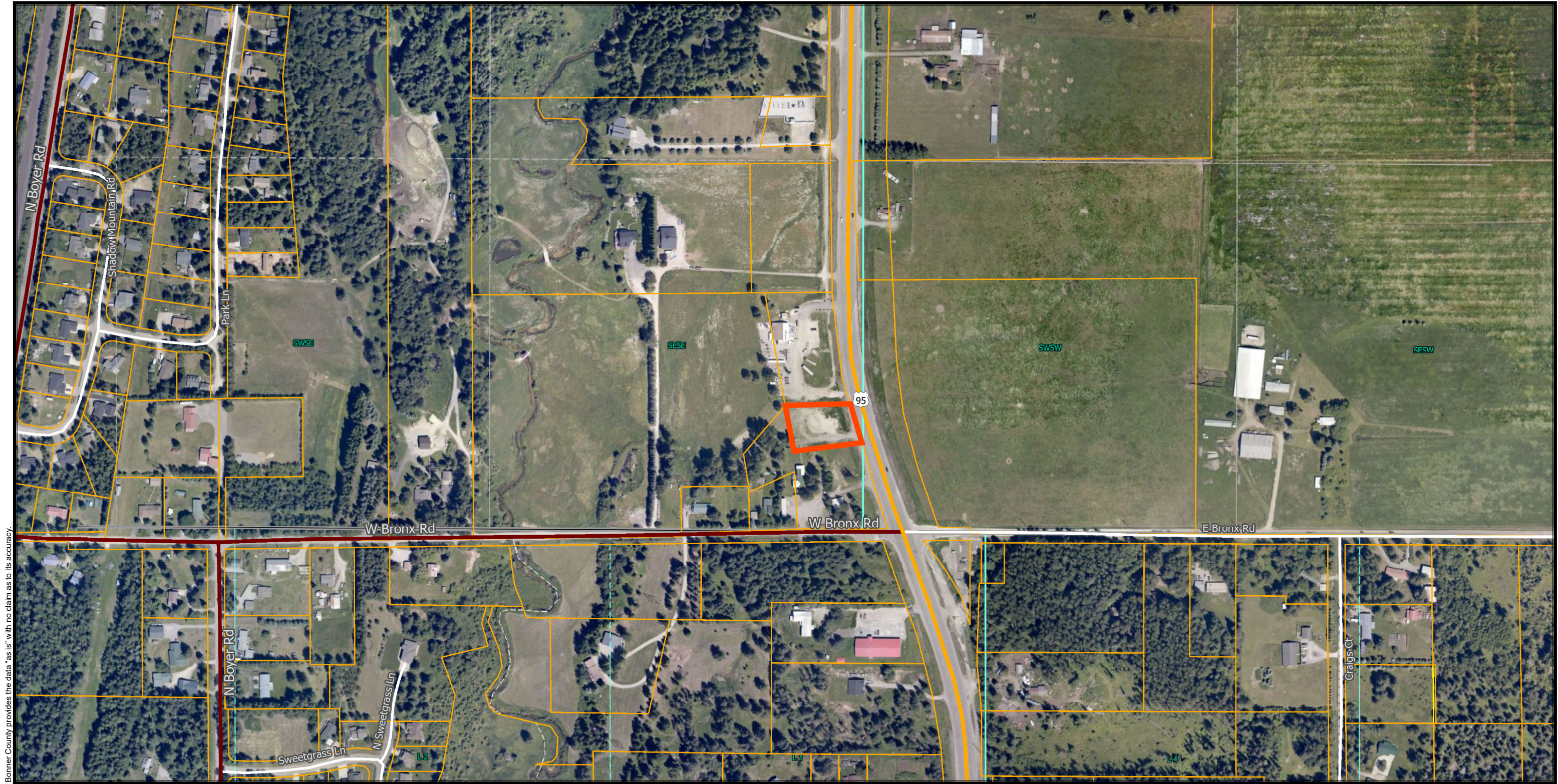


NMA West LLC R.2W T.58N. S.35



Bonner County provides the data "as is" with no claim as to its accuracy.

12/8/2022

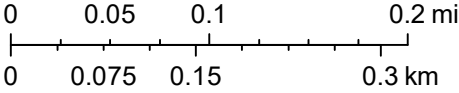
Road Centerlines

- Primary
- Secondary
- Local; Ramp
- Parcels

- Lots
- World Boundaries and Places
- World Imagery
- Low Resolution 15m Imagery
- High Resolution 60cm Imagery

- High Resolution 30cm Imagery
- Citations
- 1.2m Resolution Metadata

1:6,136



Esri, HERE, Garmin, (c) OpenStreetMap contributors, and the GIS user community  
Source: Esri, Maxar, Earthstar Geographics, and the GIS User Community

