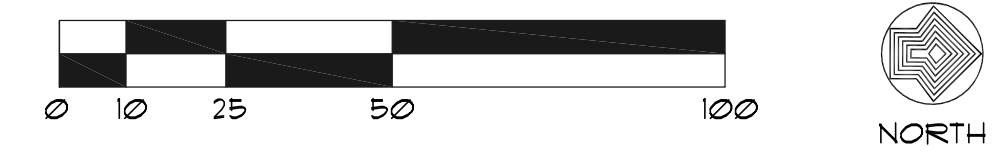


- NOTES**
- BUILDING SIGNAGE TO BE COMPLIANT WITH CODE
 - PROVIDE DARK SKY COMPLIANT LIGHTING FIXTURES. ENSURE TRAFFIC ON HIGHWAY 95 IS NOT IMPACTED BY GLARE FROM FIXTURE TYPE.
- LEGEND**
- PROPERTY BOUNDARY
 - SETBACK
 - W - WATER
 - G - GAS
 - F - FIBER
 - E - ELECTRICAL

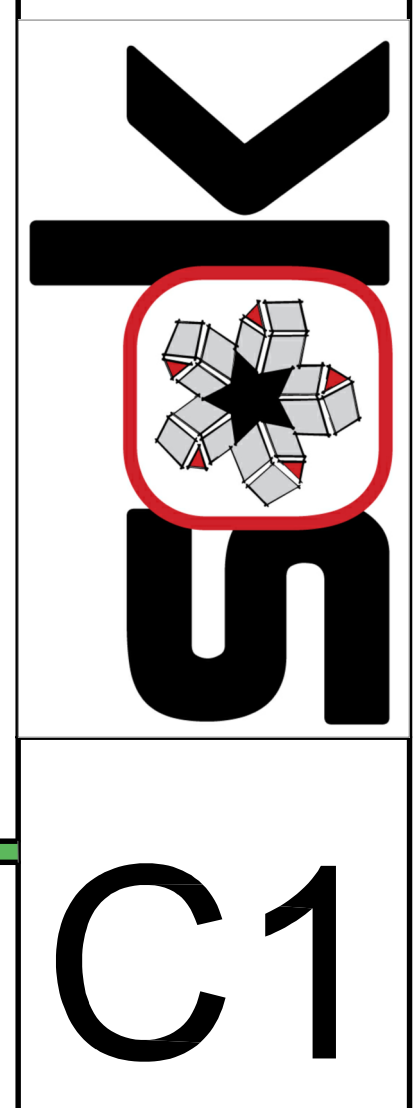
HIGHWAY 95 UPPER SITE PLAN
NTS



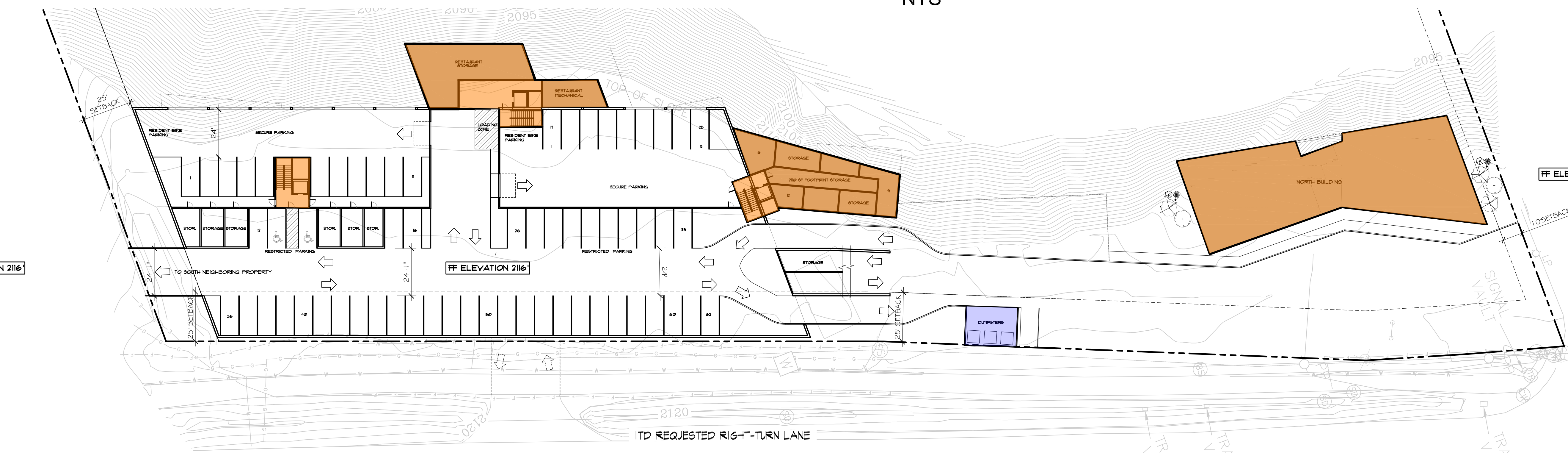
REVISION:	REVISION:	REVISION:	REVISION:
DRAWN BY: SOK	DATE: 28 JAN 2022		

SANDCREEK RIDGE
RPP00000107502A + RPP00000107401A
SITE PLAN

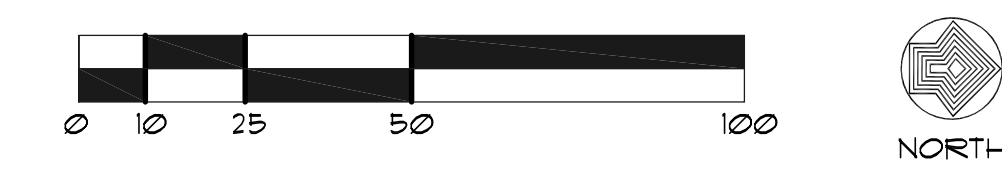
SOK design studio
534 PINE STREET SANDPOINT IDAHO 83864
WWW.SOKDESIGNS.COM
INFO@SOKDESIGNS.COM 208.265.9160



C.U.P. APPLICATION SET ONLY. NOT FOR CONSTRUCTION



HIGHWAY 95 LOWER SITE PLAN
NTS



RIDGE
SAND CREEK