

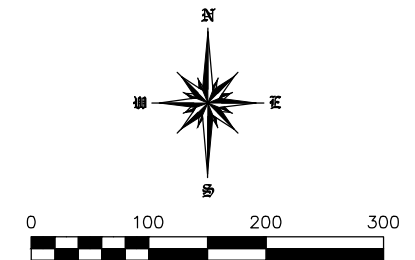
# RECORD OF SURVEY

## FOR TWO RIVERS RANCH, LLC

LYING IN A PORTION THE EAST HALF OF SECTION 3,  
TOWNSHIP 57 NORTH, RANGE 2 WEST, BOISE MERIDIAN,  
CITY OF PONDERAY, BONNER COUNTY, IDAHO

### UTILITIES LEGEND

- POWER POLE
- WATER METER
- WATER VALVE
- FIRE HYDRANT
- TELEPHONE RISER
- SANITARY MANHOLE
- STORM MANHOLE
- FIBER OPTIC LINE
- GAS LINE
- ELECTRIC LINE
- WATER LINE



### LEGEND

- SECTIONAL CORNER, AS NOTED.
- FOUND REBAR AND CAP, PLS 14879
- FOUND REBAR AND CAP, PLS 7879
- FOUND ALUMINUM CAP, ROW MON BY PLS 14879
- FOUND MONUMENTATION, AS NOTED
- FOUND REBAR, NO CAP OR AS NOTED
- FOUND ZINC R/W MONUMENT
- CALCULATED POINT, NOTHING SET
- RECORD OF SURVEY FOR E.G. THOMPSON FAMILY LLC BY PLS 14879, INST. NO. 994519, 10/28/2021.
- RECORD OF SURVEY (BLA) FOR PETE THOMPSON BY PLS 7879 INST. NO. 698642, 2/22/2006.
- RECORD OF SURVEY FOR ITD BY PLS 14879, INST. NO. 874277, 6/2/2015.
- QUIT CLAIM DEED INST. NO. 811186, 6/20/2011.
- WARRANTY DEED INST. NO. 897199, 10/31/2016.
- WARRANTY DEED INST. NO. 741309, 11/20/2007.
- WARRANTY DEED INST. NO. 821870, 2/9/2012.
- CONTOUR LINES, APPROXIMATE

### METHOD OF SURVEY

THIS SURVEY WAS PERFORMED USING TRIMBLE R10, GNSS RECEIVERS AND THE DATA WAS PROCESSED USING NGS OPUS AND TRIMBLE BUSINESS CENTER. CONVENTIONAL SURVEYING WAS COMPLETED BY CONVENTIONAL AND RADIAL TIE TECHNIQUES USING A NIKON TOTAL STATION.

### SURVEYOR'S NARRATIVE

- THE PURPOSE OF THIS SURVEY IS FOR A BOUNDARY LINE ADJUSTMENT BETWEEN THREE UNPLATTED PARCELS.
- FOUND EXISTING MONUMENTS AS SHOWN, FELL WITH ACCEPTABLE SURVEY TOLERANCES AS BEING THE INDICATED CORNERS.
- FOR LIST OF RELEVANT RECORDS AND/OR SURVEYS, SEE LEGEND THIS PAGE.
- THIS SURVEY MAKES NO REPRESENTATION OF OWNERSHIP, NO ATTEMPTS TO SHOW ALL EASEMENTS OF RECORD OR IN VIEW, NOR PHYSICAL FEATURES AND IMPROVEMENTS OF THE PROPERTY.

### SURVEYOR'S CERTIFICATE

I, SCOTT L. TOLDNESS, P.L.S. 6603, STATE OF IDAHO, DO HEREBY CERTIFY THAT THIS RECORD OF SURVEY HAS BEEN PREPARED BY ME OR UNDER MY DIRECTION IN CONFORMANCE WITH CHAPTER 19, TITLE 55 OF THE IDAHO CODE AND THAT THE MAP SHOWN HEREON IS A TRUE REPRESENTATION OF A SURVEY MADE BY ME.

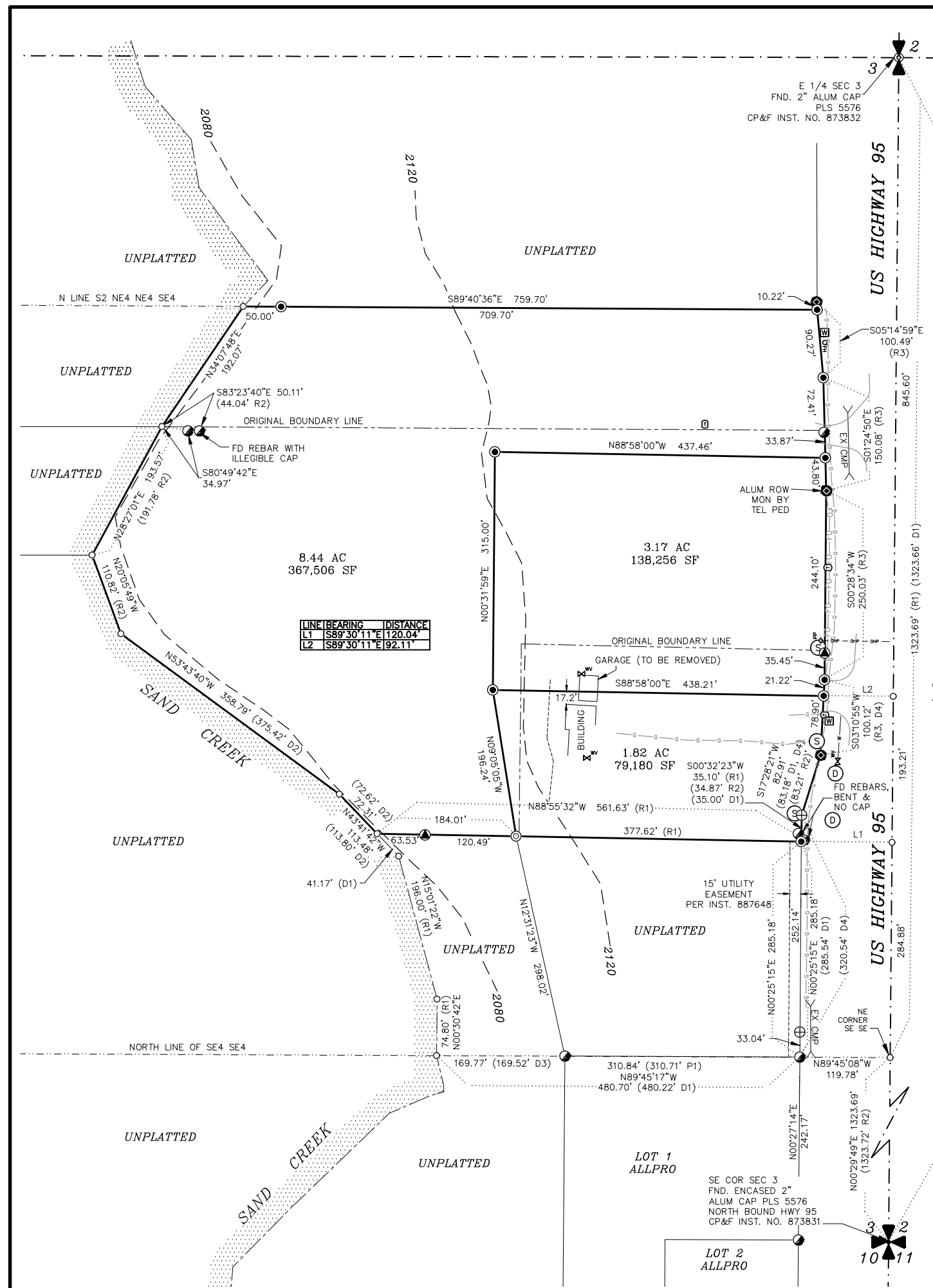


### BASIS OF BEARING

THE BASIS OF BEARINGS FOR THIS SURVEY WAS ESTABLISHED BY GPS CONTROL COORDINATES DERIVED FROM NGS OPUS SOLUTIONS USING A REFERENCE FRAME OF NAD83 (2011)(EPOCH: 2010.000). ALL BEARINGS REFER TO THE IDAHO COORDINATE SYSTEM OF 1983, WEST ZONE, (1103) - US SURVEY FT. REFER TO THE DRAWING FOR SPECIFIC LINE AND MONUMENTS USED.

DISTANCES SHOWN HAVE BEEN CONVERTED FROM GRID TO GROUND USING A COMBINED ADJUSTMENT FACTOR (CAF) OF 1.0000971030. GEODETIC NORTH IS AN ANGULAR ROTATION OF -0°35'41" AT THE EAST QUARTER CORNER OF SECTION 3.

PLACE RECORDING LABEL HERE



LINE	BEARING	DISTANCE
L1	S89°30'11"E	120.04'
L2	S89°30'11"E	92.11'

1/4	SECTION	TOWNSHIP	RANGE	MONTANA	IDAHO
	3	57 N	2 W		
PROJECT #: 21-214 McDUGAL DRAWING NAME: 21-214 McDUGAL PLAT.DWG					
<b>RECORD OF SURVEY</b> FOR <b>TWO RIVERS RANCH, LLC</b> GLAHE & ASSOCIATES PROFESSIONAL LAND SURVEYORS 303 Church Street Sandpoint, Idaho 83864 208-265-4474				Scale: 1"=100' Checked By: SLT Date: 2/3/2022	Drawn By: TRP Sheet: 1 of 1