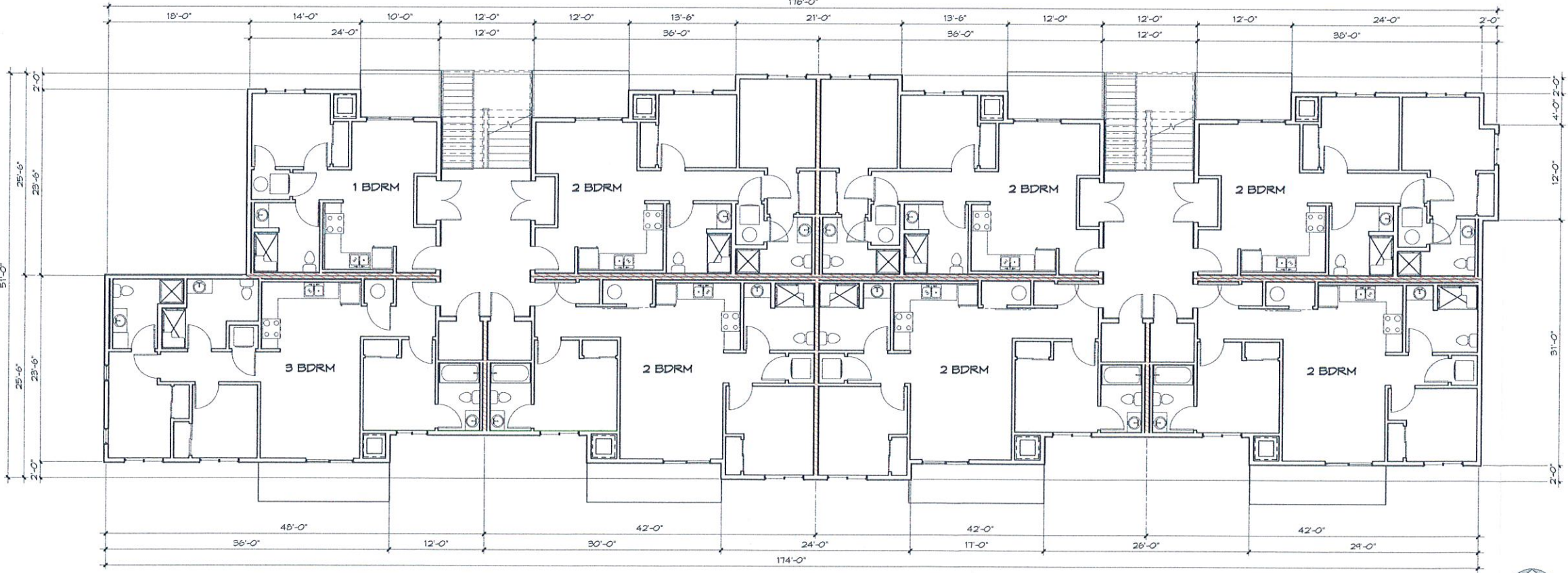


BUILDING A FIRST FLOOR PLAN

1/8" = 1'-0"



BUILDING A SECOND & THIRD FLOOR PLAN

1/8" = 1'-0"



UP22-083
RECEIVED

JAN 26 2022

PLANNING OFFICE
CITY OF PONDERAY

NO.	DATE	BY

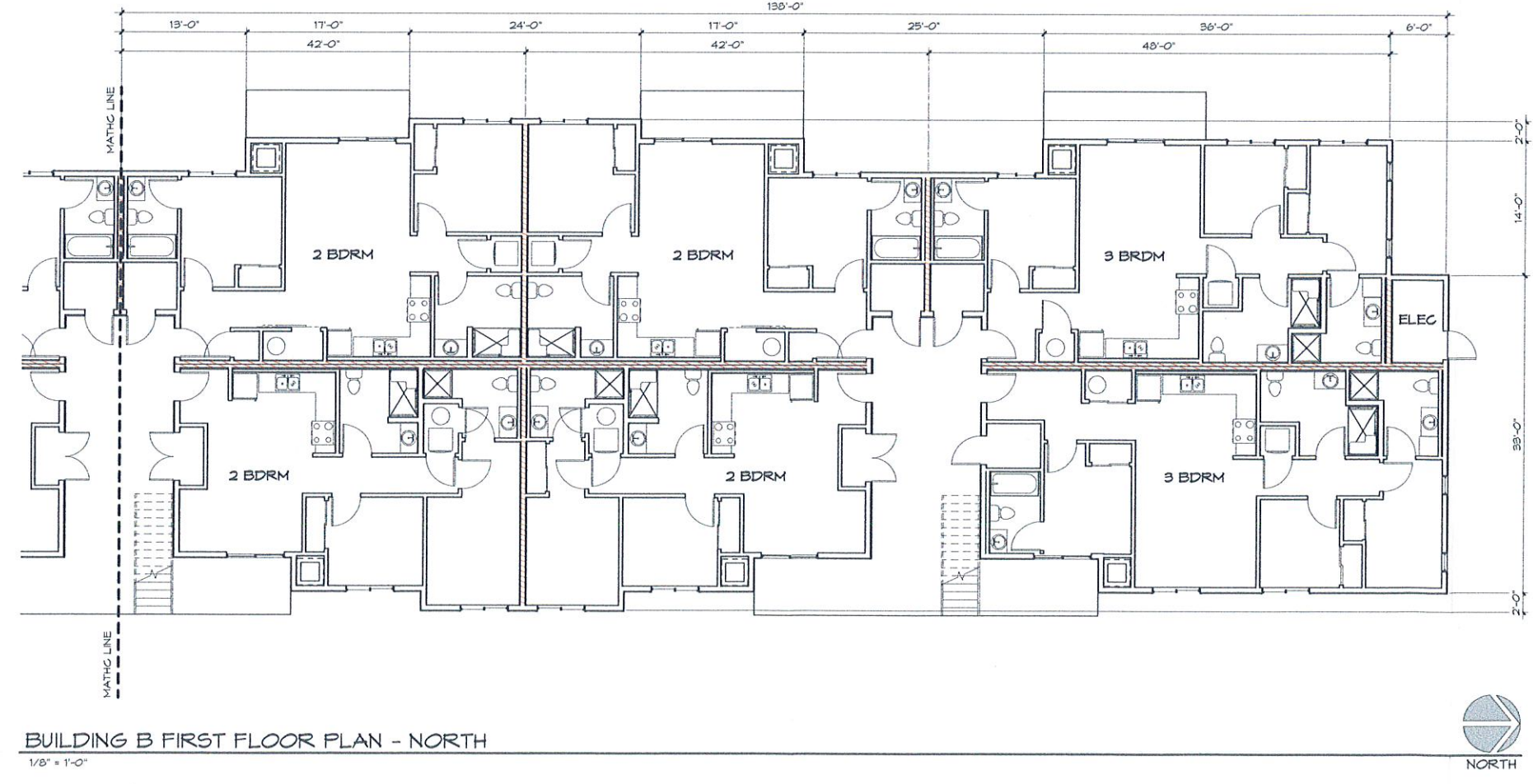
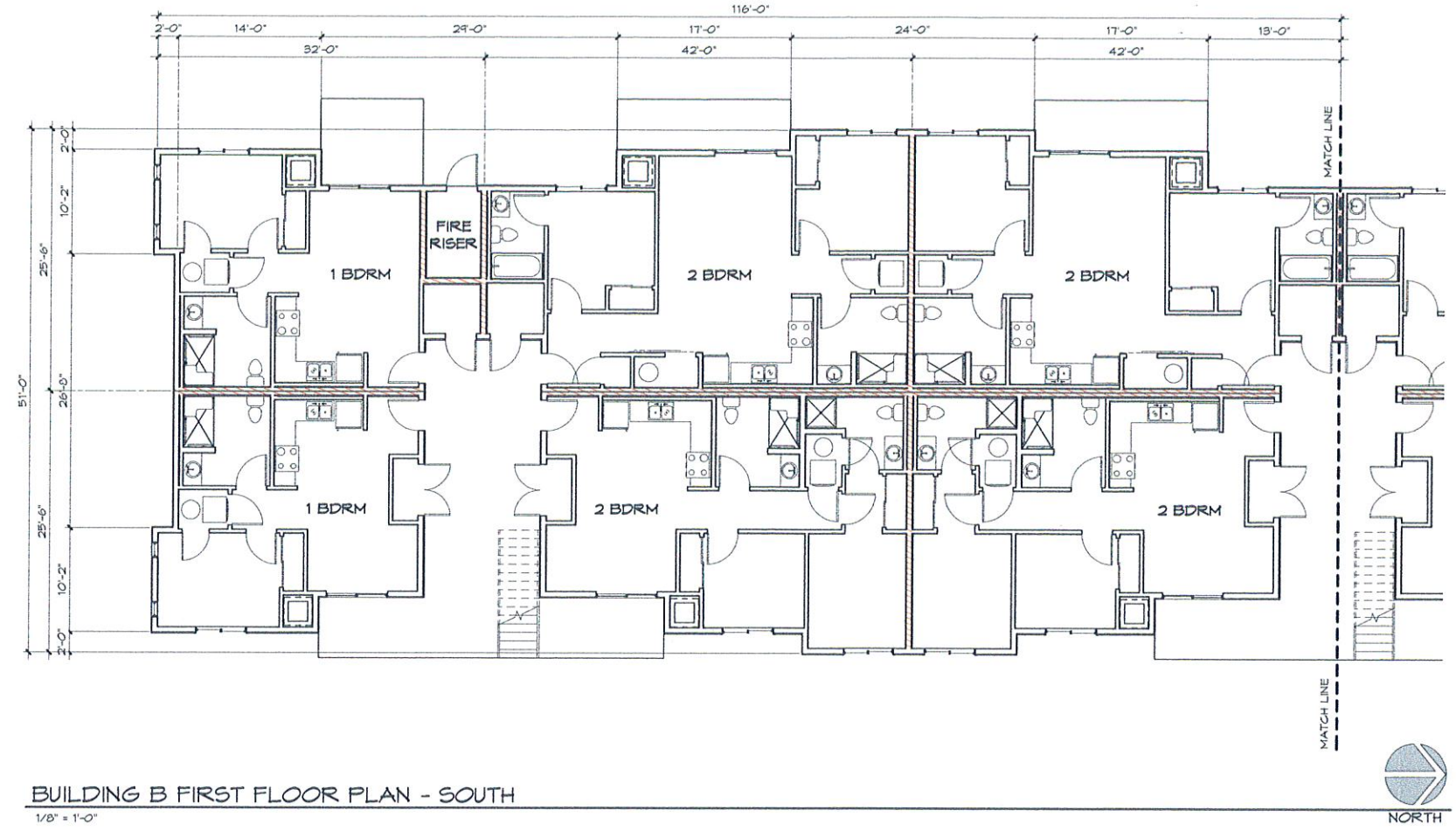
SHEET TITLE
BUILDING A FLOOR PLANS

PROJECT TITLE
PONDERAY PLAZA APARTMENTS
PONDERAY, IDAHO
EASTMARK CAPITAL GROUP

PROJECT NO.	2134
DRAWN	FD
CHECKED	MSK
DATE	01/04/2022
DRAWING NO.	

A101

1/4/2022 11:51:46 AM C:\Rev\1_Temp\134_Ponderay Apartments_Prisilla.rvt



UP22-083
RECEIVED

JAN 26 2022

PLANNING OFFICE
CITY OF PONDERAY

NO.	DATE	BY

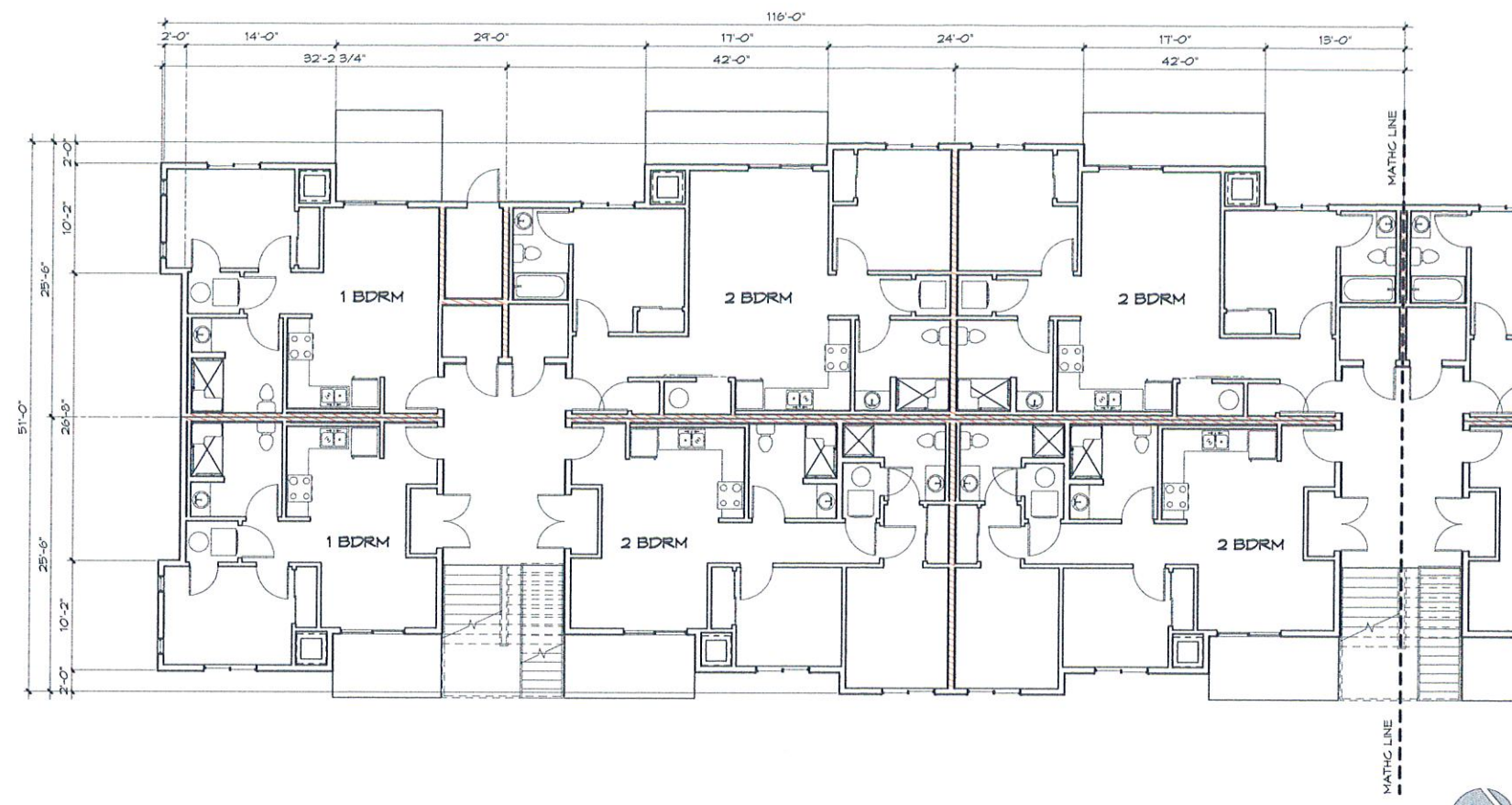
SHEET TITLE: BUILDING B FIRST FLOOR PLAN
PROJECT TITLE: PONDERAY PLAZA APARTMENTS
PONDERAY, IDAHO
EASTMARK CAPITAL GROUP

PROJECT NO.	2134
DRAWN	FD
CHECKED	MSK
DATE	01/04/2022
DRAWING NO.	

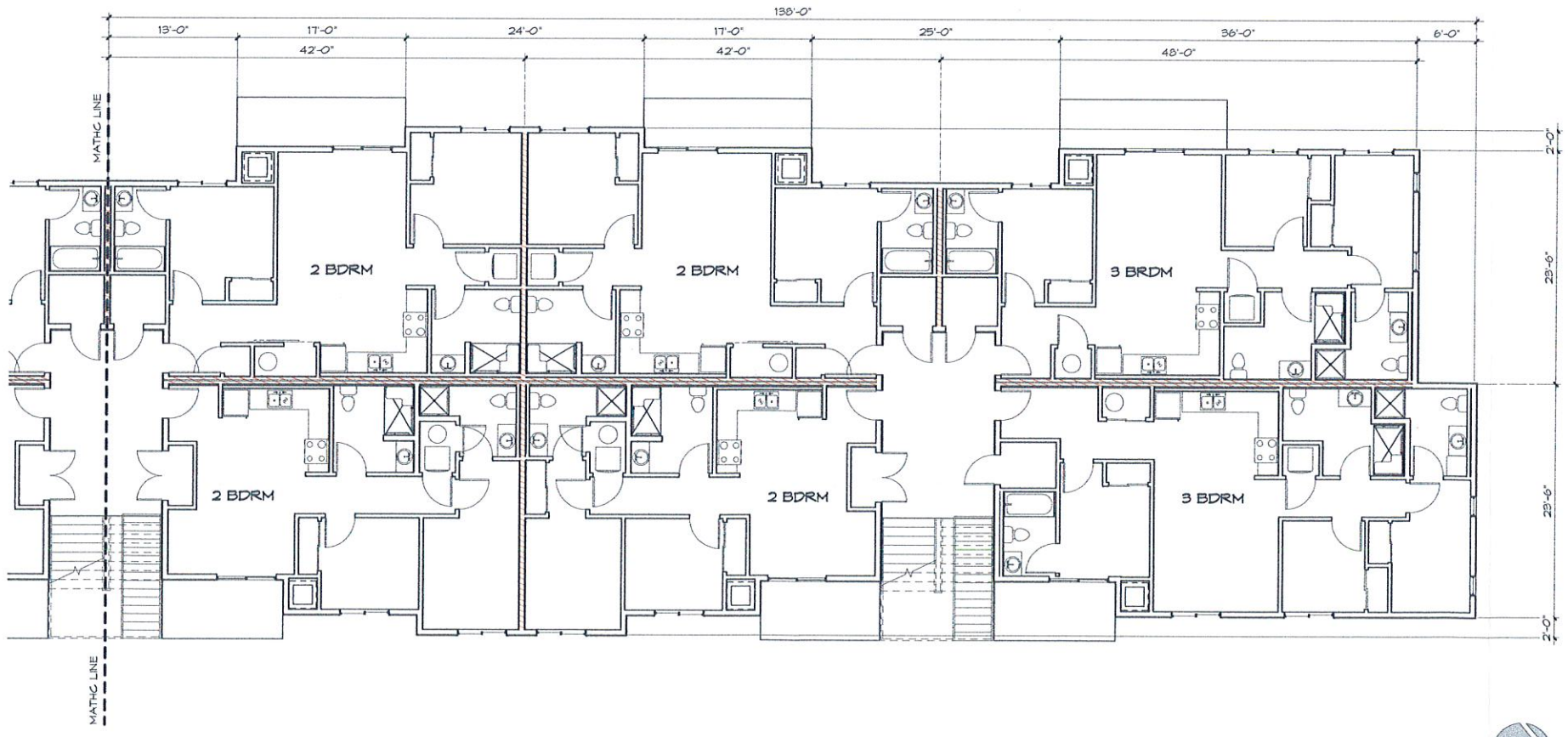
A102



ZBA ARCHITECTURE
 421 W. RIVERSIDE, SUITE 850
 SPokane, WA 99201
 Copyright © 2022 ZBA ARCHITECTURE, P.C. All Rights Reserved



BUILDING B SECOND & THIRD FLOOR PLAN - SOUTH
 1/8" = 1'-0"



BUILDING B SECOND & THIRD FLOOR PLAN - NORTH
 1/8" = 1'-0"

UP22-083
RECEIVED

JAN 26 2022

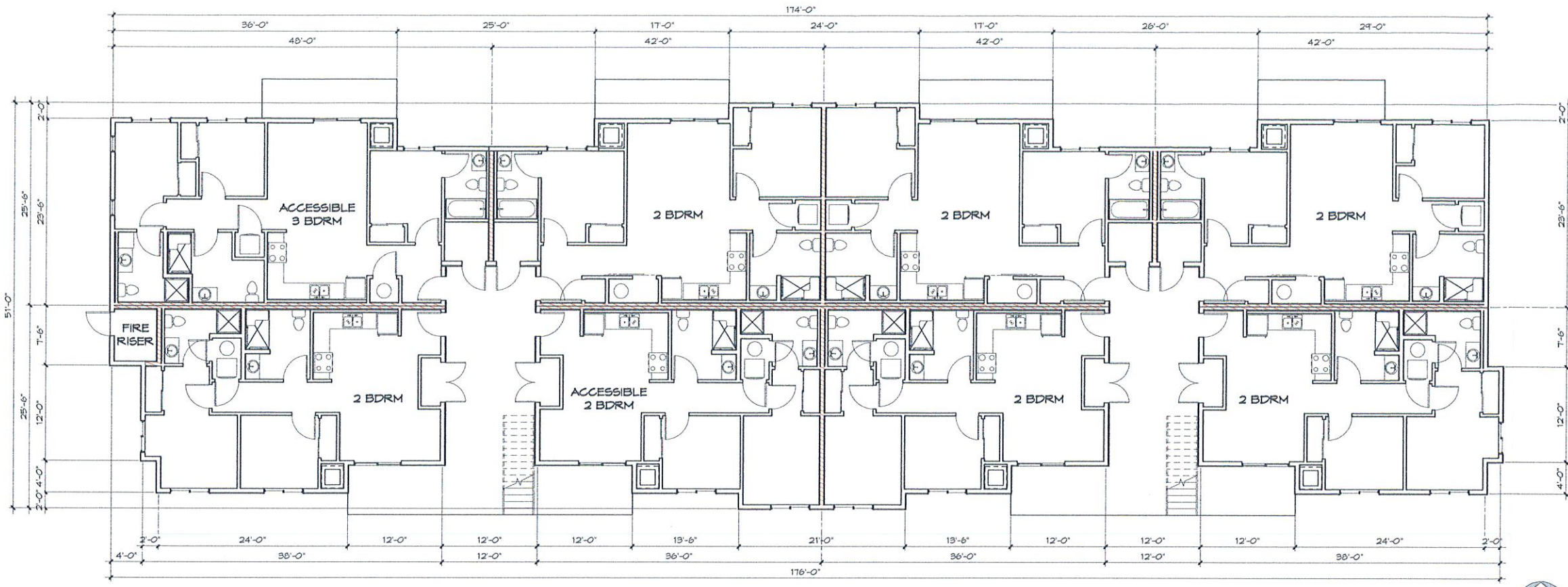
PLANNING OFFICE
 CITY OF PONDERAY

NO.	DATE	BY

SHEET TITLE
 BUILDING B SECOND & THIRD FLOOR PLAN
 PROJECT TITLE
 PONDERAY PLAZA APARTMENTS
 PONDERAY, IDAHO
 EASTMARK CAPITAL GROUP

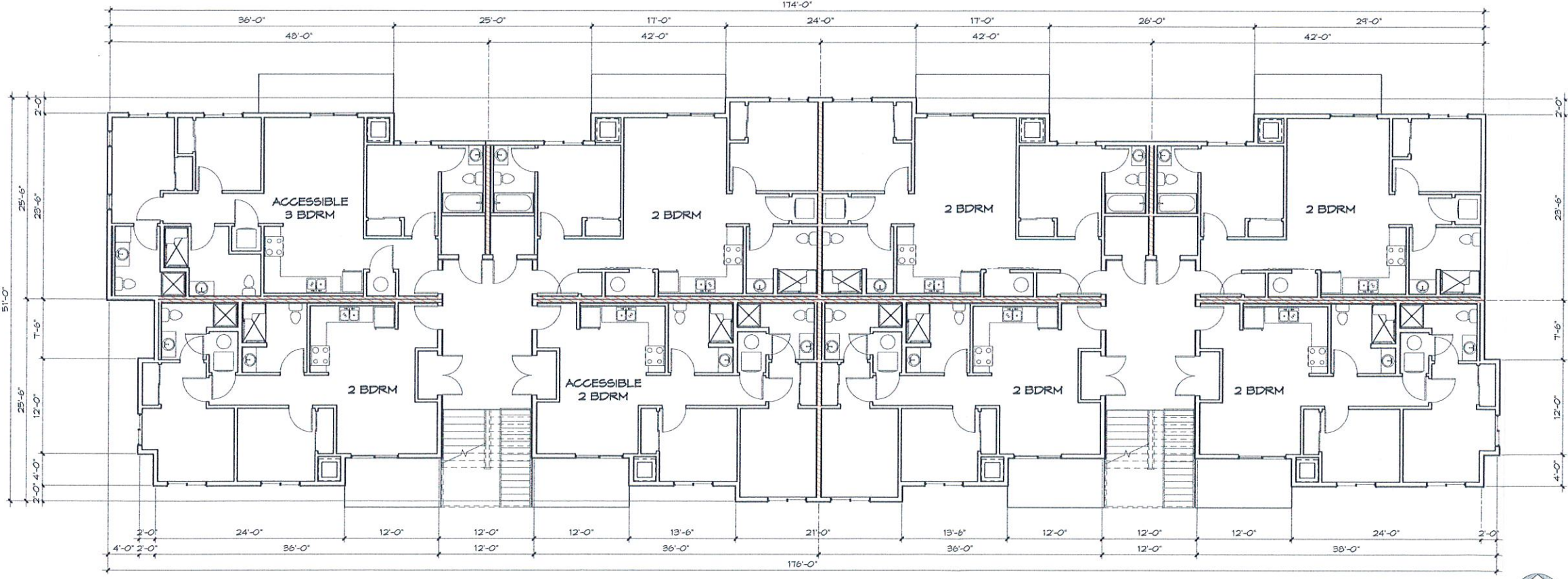
PROJECT NO. 2134
 DRAWN PD
 CHECKED MSK
 DATE 01/04/2022
 DRAWING NO.

A103



BUILDING C FIRST FLOOR PLAN

1/8" = 1'-0"



BUILDING C SECOND & THIRD FLOOR PLAN

1/8" = 1'-0"



UP22-083
RECEIVED

JAN 26 2022

PLANNING OFFICE
CITY OF PONDERAY

NO.	DATE	BY

BUILDING C FLOOR PLANS
PONDERAY PLAZA APARTMENTS
 PONDERAY, IDAHO
 EASTMARK CAPITAL GROUP

PROJECT NO.	2154
DRAWN	PD
CHECKED	MSK
DATE	01/04/2022
DRAWING NO.	

A104

1/4/2022 11:57:54 AM C:\Revit_Temp\2154_Ponderay_Apartments_Priscilla.rvt