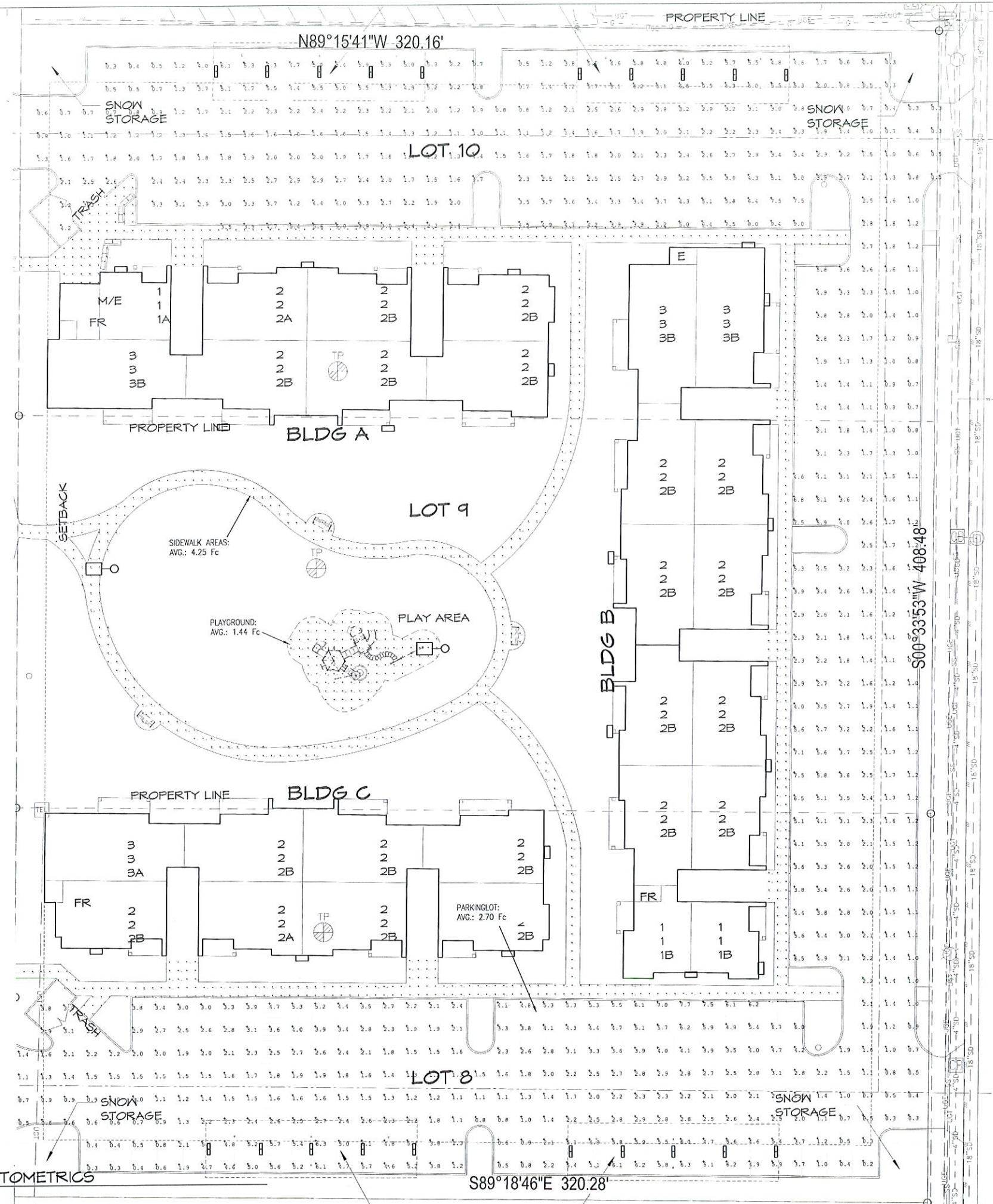


**RECEIVED**  
**FEB 18 2022**  
**PLANNING OFFICE**  
**CITY OF PONDERAY**



**ELECTRICAL SITE PLAN - PHOTOMETRICS**  
 1"=30'-0"



NO.	DATE	BY

**L'S Engineering**  
 High Performance Design  
 The Commission Building, West 205 Pacific Avenue, Suite 21, Spokane, WA 99201  
 (509) 747-2719 Fax (509) 747-2985 www.lse.com

**SITE PLAN - PHOTOMETRICS**  
**PROJECT TITLE**  
**PONDERAY PLAZA APARTMENTS**  
 PONDERAY, IDAHO  
 EASTMARK CAPITAL GROUP

SHEET TITLE	
PROJECT TITLE	
DATE	02/18/2022
PROJECT NO.	2134
DRAWN	JPB
CHECKED	JDN
DRAWING NO.	

**E103**