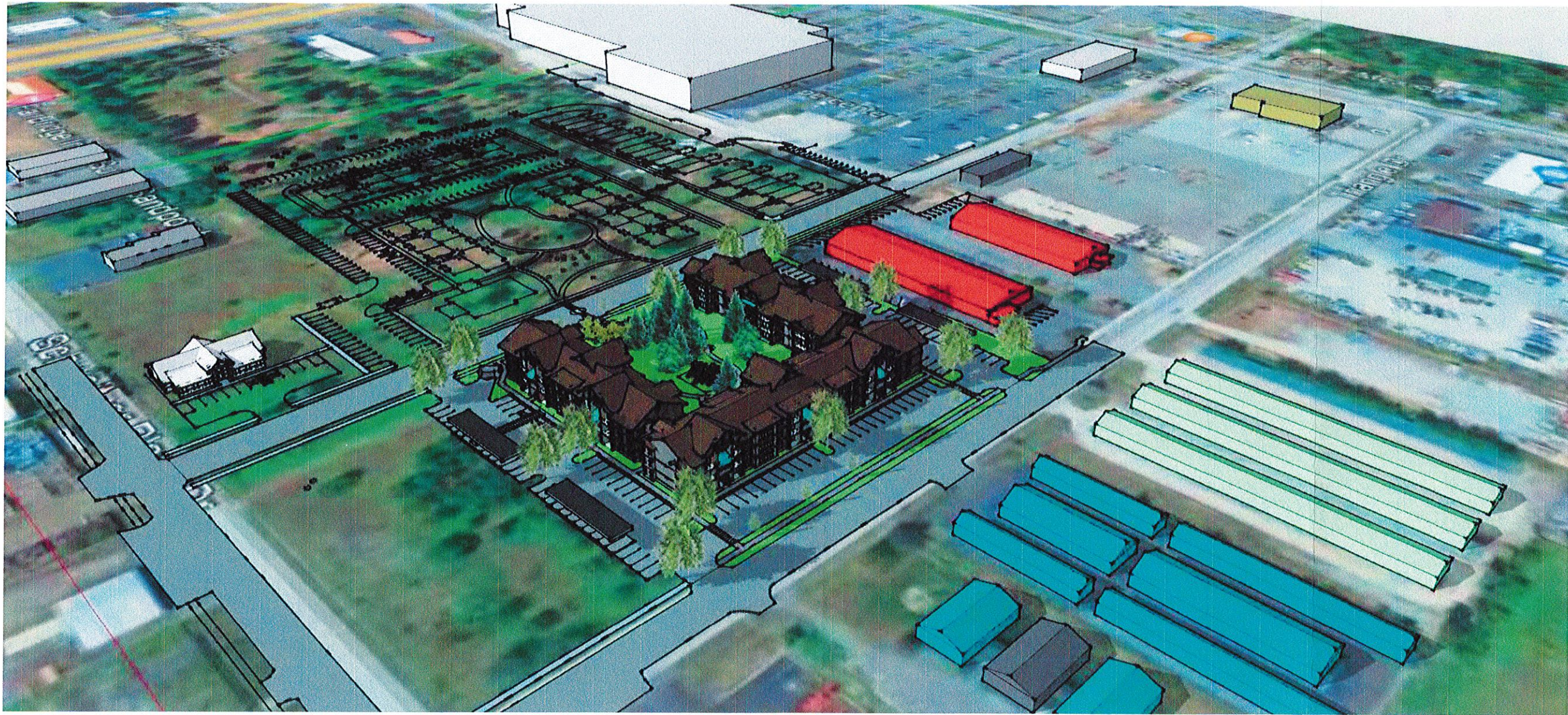


ZBA ARCHITECTURE
421 W. RIVERSIDE, SUITE 840
SPOKANE, WA 99201
P 509 455 8236
F 509 455 8238



1 CONCEPTUAL AERIAL VIEW - BIRDSEYE VIEW LOOKING NORTHWEST
1" = 20'-0"

NO.	DATE	BY

REVISIONS

CONCEPTUAL AERIAL VIEWS
PROJECT TITLE
PONDERAY PLAZA APARTMENTS
PONDERAY, IDAHO
EASTMARK CAPITAL GROUP

SHEET TITLE
SEAL

PROJECT NO. 2134
DRAWN Author
CHECKED Checker
DATE 01/04/2022
DRAWING NO.

A105

UP-22-083
RECEIVED
JAN 26 2022
PLANNING OFFICE
CITY OF PONDERAY

