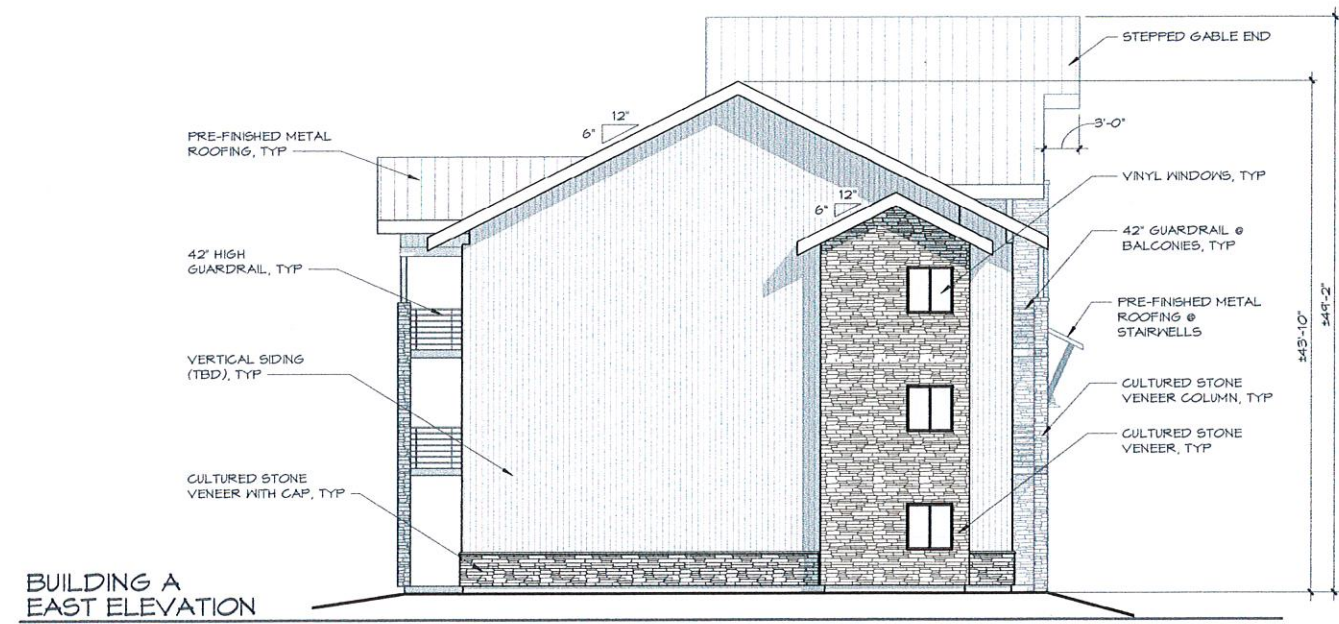
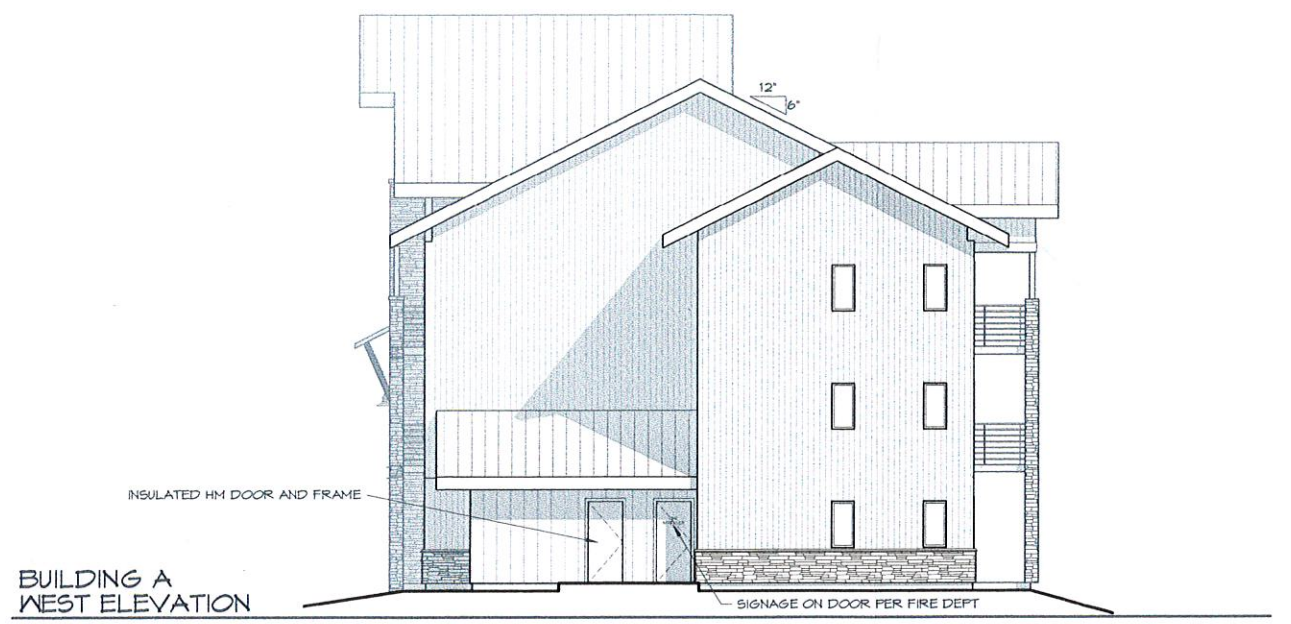


BUILDING A NORTH ELEVATION
1/8" = 1'-0"



BUILDING A EAST ELEVATION
1/8" = 1'-0"



BUILDING A WEST ELEVATION
1/8" = 1'-0"



BUILDING A SOUTH ELEVATION
1/8" = 1'-0"

C:\Revit_Temp\2134_Pondoray_Apartments_Principals.rvt

1/4/2022 11:58:01 AM

PLANNING OFFICE
CITY OF PONDORAY

RECEIVED
1/22-2022
JAN 26 2022

| NO. | DATE | BY |
|-----|------|----|
| | | |
| | | |
| | | |

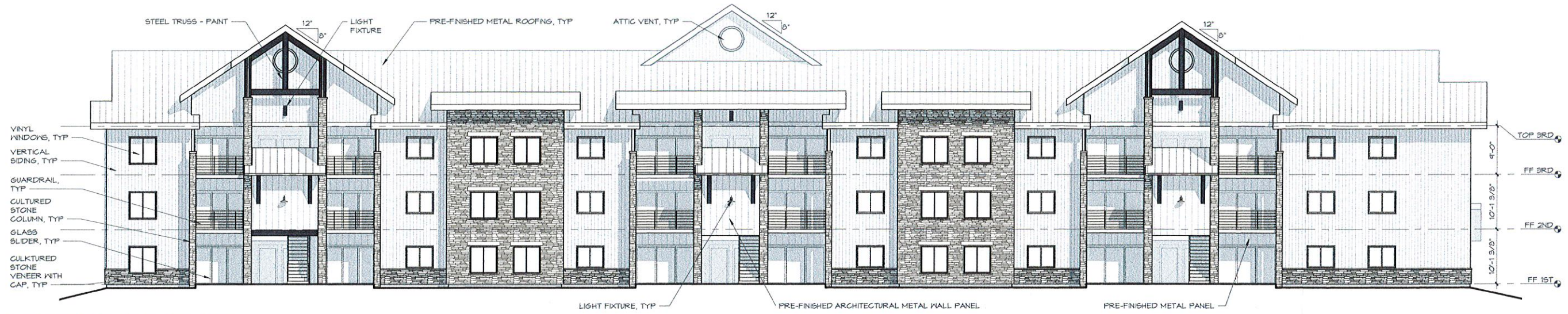
| NO. | DATE | BY |
|-----|------|----|
| | | |
| | | |
| | | |

BUILDING A EXTERIOR ELEVATIONS

PONDORAY PLAZA APARTMENTS
PONDORAY, IDAHO
EASTMARK CAPITAL GROUP

PROJECT NO. 2134
DRAWN: TYWG
CHECKED: WAF
DATE: 01/04/2022
DRAWING NO.

A201

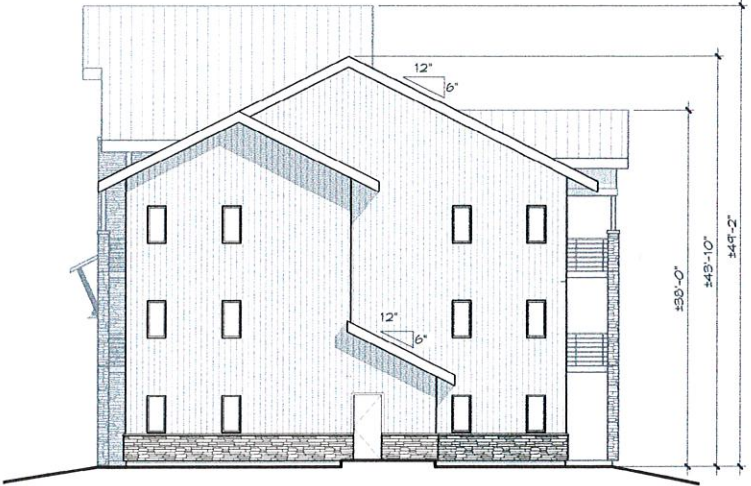


BUILDING B EAST ELEVATION
1" = 10'-0"

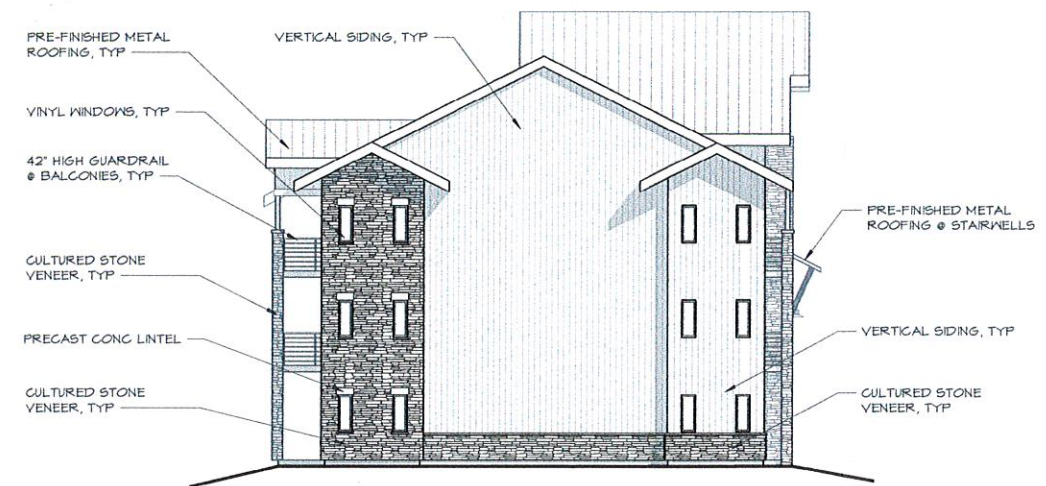
UP22-083
RECEIVED

JAN 26 2022

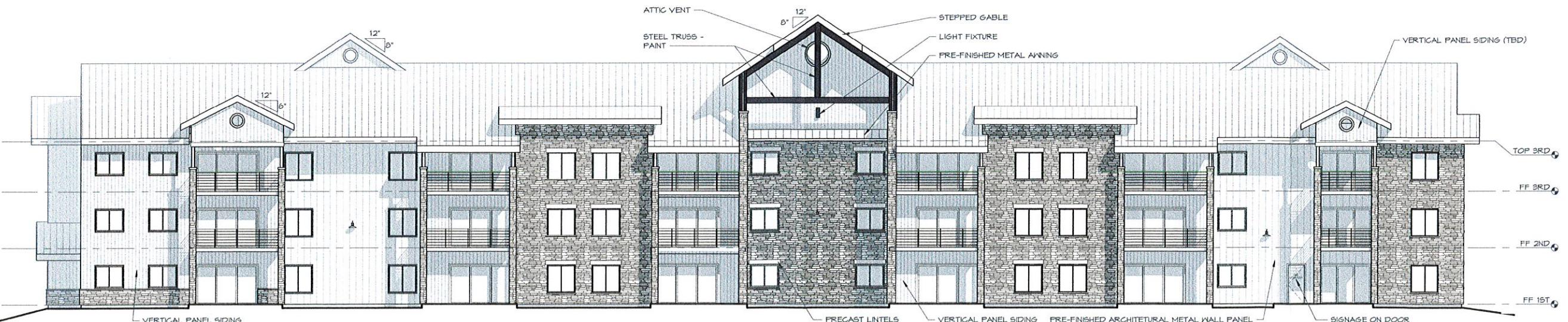
PLANNING OFFICE
CITY OF PONDERAY



BUILDING B NORTH ELEVATION
1" = 10'-0"



BUILDING B SOUTH ELEVATION
1" = 10'-0"



BUILDING B WEST ELEVATION
1" = 10'-0"

1/4/2022 11:50:10 AM C:\Revit_Temp\2184_Ponderay Apartments_Prisilla.rvt

| NO. | DATE | BY |
|-----|------|----|
| | | |
| | | |

| REVISIONS | |
|-----------|--|
| | |
| | |

BUILDING B EXTERIOR ELEVATIONS
PONDERAY PLAZA APARTMENTS
PONDERAY, IDAHO
EASTMARK CAPITAL GROUP

| | |
|-------------|------------|
| PROJECT NO. | 2184 |
| DRAWN | TYG |
| CHECKED | PLAF |
| DATE | 01/04/2022 |
| DRAWING NO. | |

A202



| NO. | DATE | BY |
|-----|------|----|
| | | |
| | | |

| NO. | DATE | BY |
|-----|------|----|
| | | |
| | | |

SHEET TITLE
BUILDING C EXTERIOR ELEVATIONS

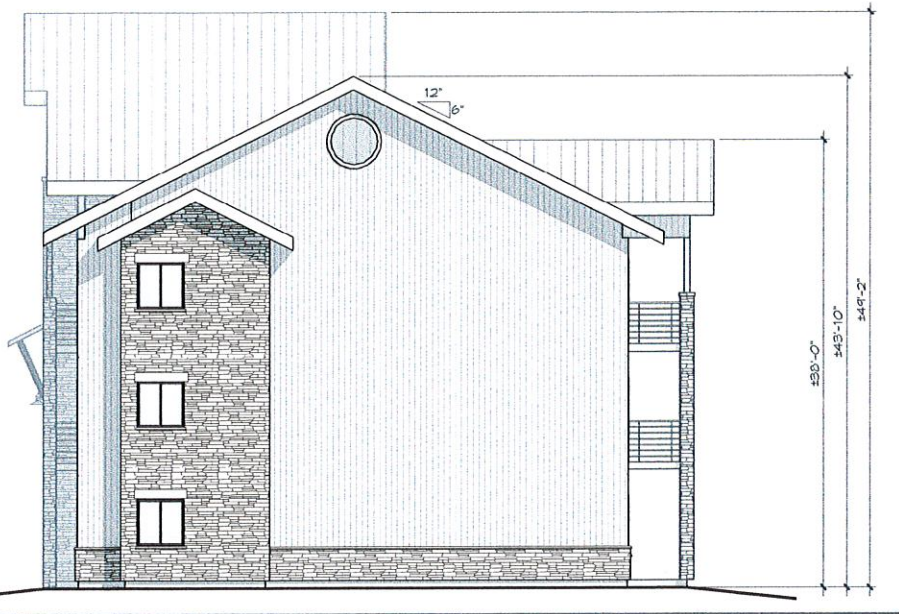
PROJECT TITLE
PONDERAY PLAZA APARTMENTS
PONDERAY, IDAHO
EASTMARK CAPITAL GROUP

PROJECT NO. 2134
DRAWN TWS
CHECKED WAF
DATE 01/04/2022
DRAWING NO.

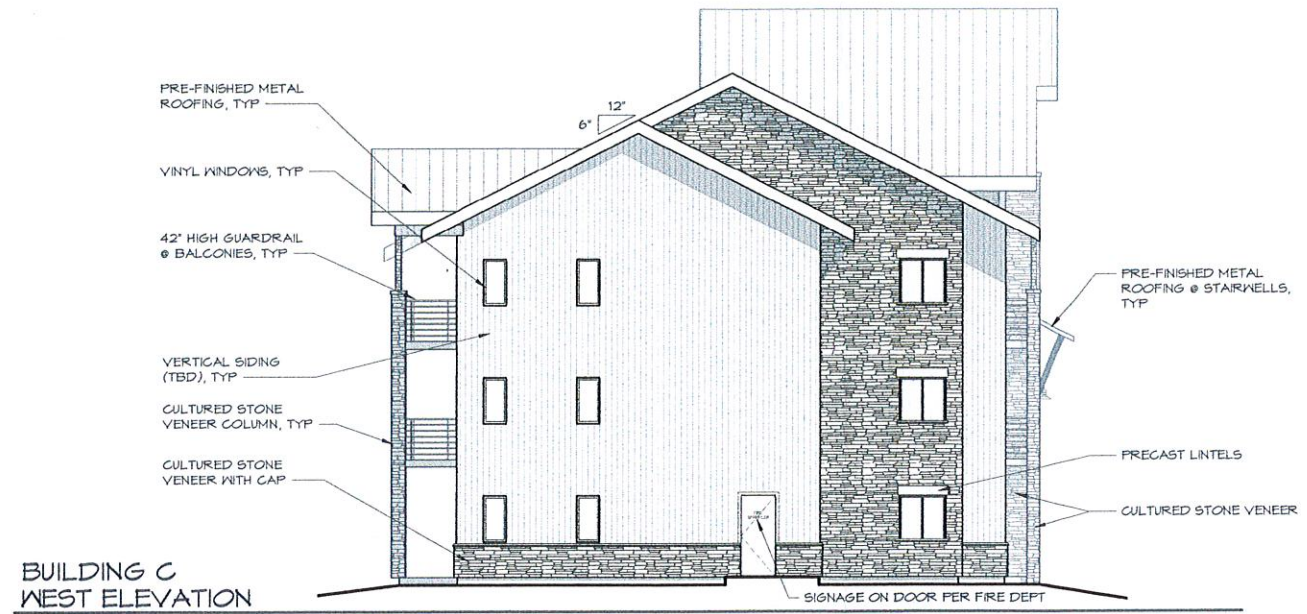
A203



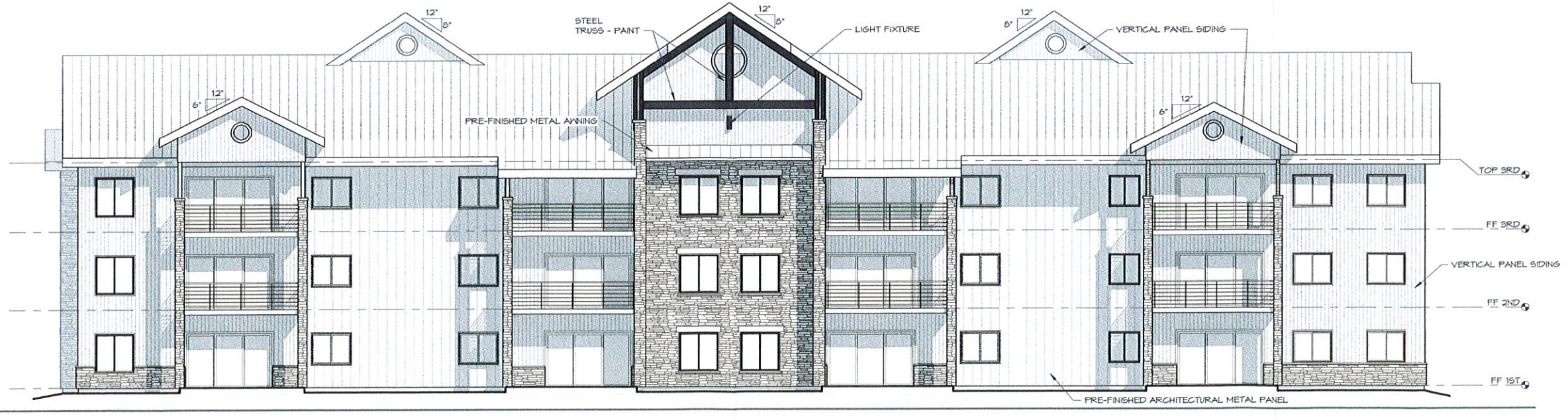
**BUILDING C
NORTH ELEVATION**
1/8" = 1'-0"



**BUILDING C
EAST ELEVATION**
1/8" = 1'-0"



**BUILDING C
WEST ELEVATION**
1/8" = 1'-0"



**BUILDING C
SOUTH ELEVATION**
1/8" = 1'-0"

WP 22 -083
RECEIVED
JAN 26 2022
PLANNING OFFICE
CITY OF PONDERAY

1/4/2022 11:50:11 AM C:\Revit\Temp\2134_Ponderay Apartments_P\iscillar.rvt