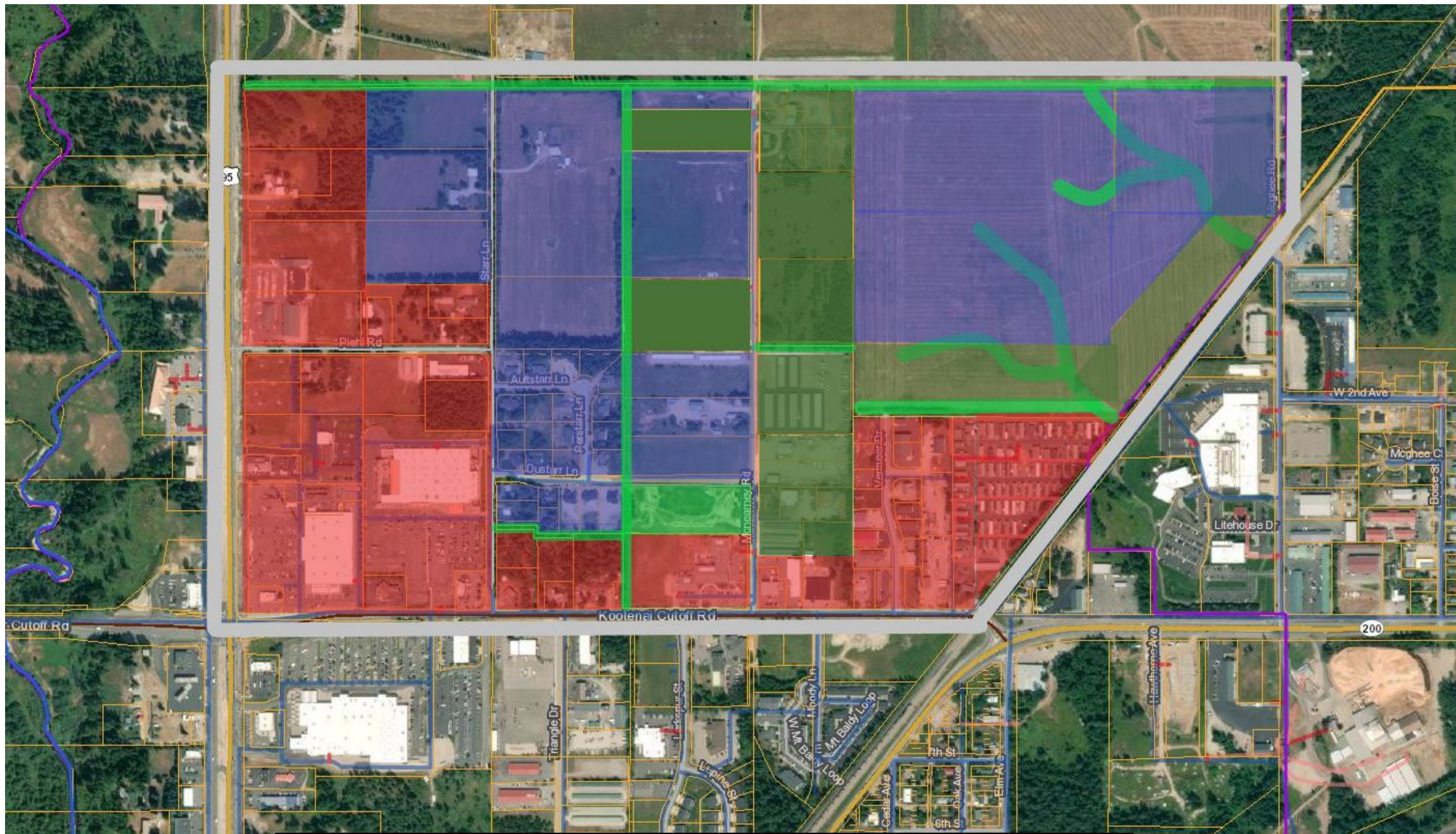


Current Zoning

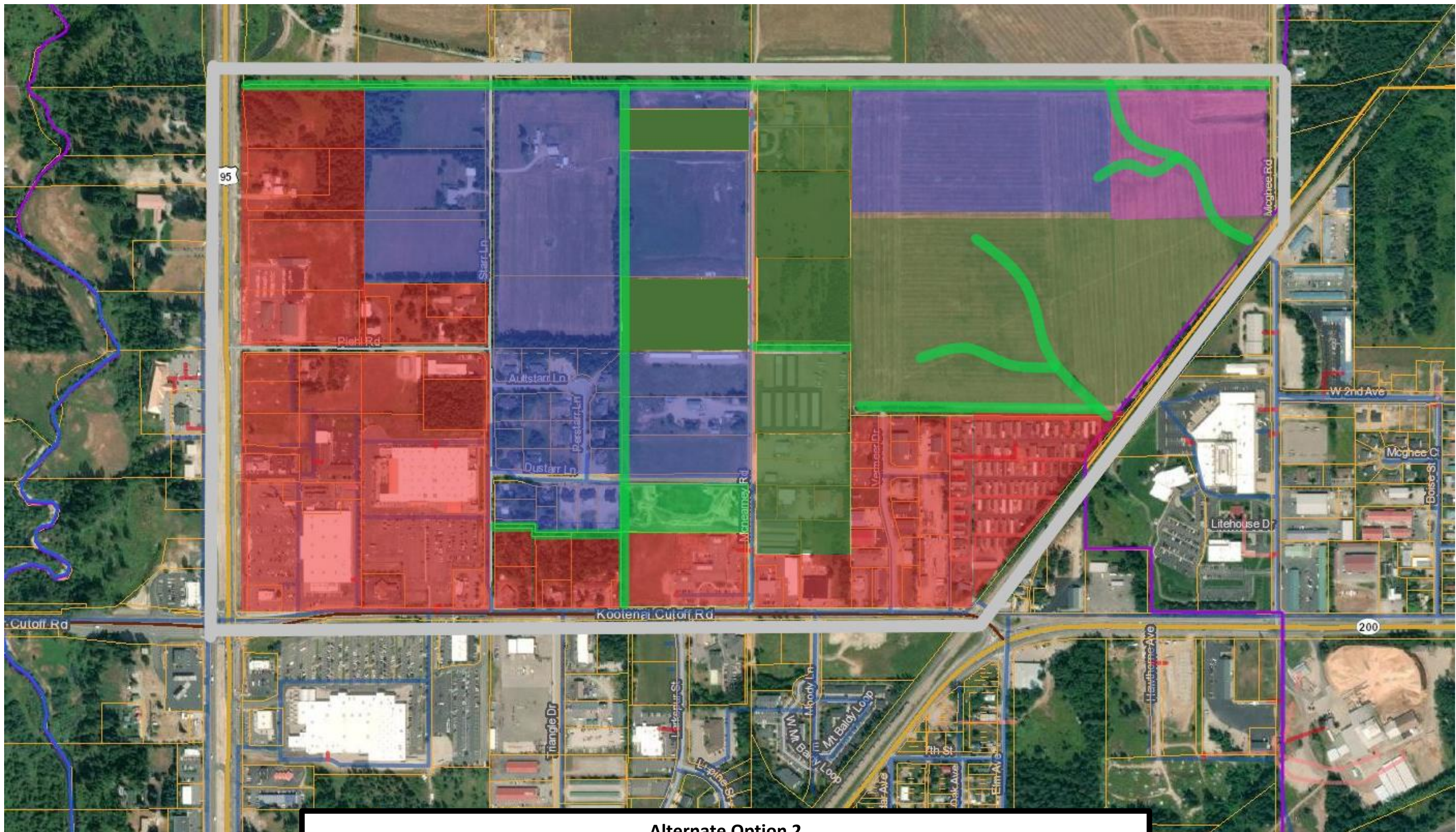


Original McNearney Neighborhood Zoning Proposal



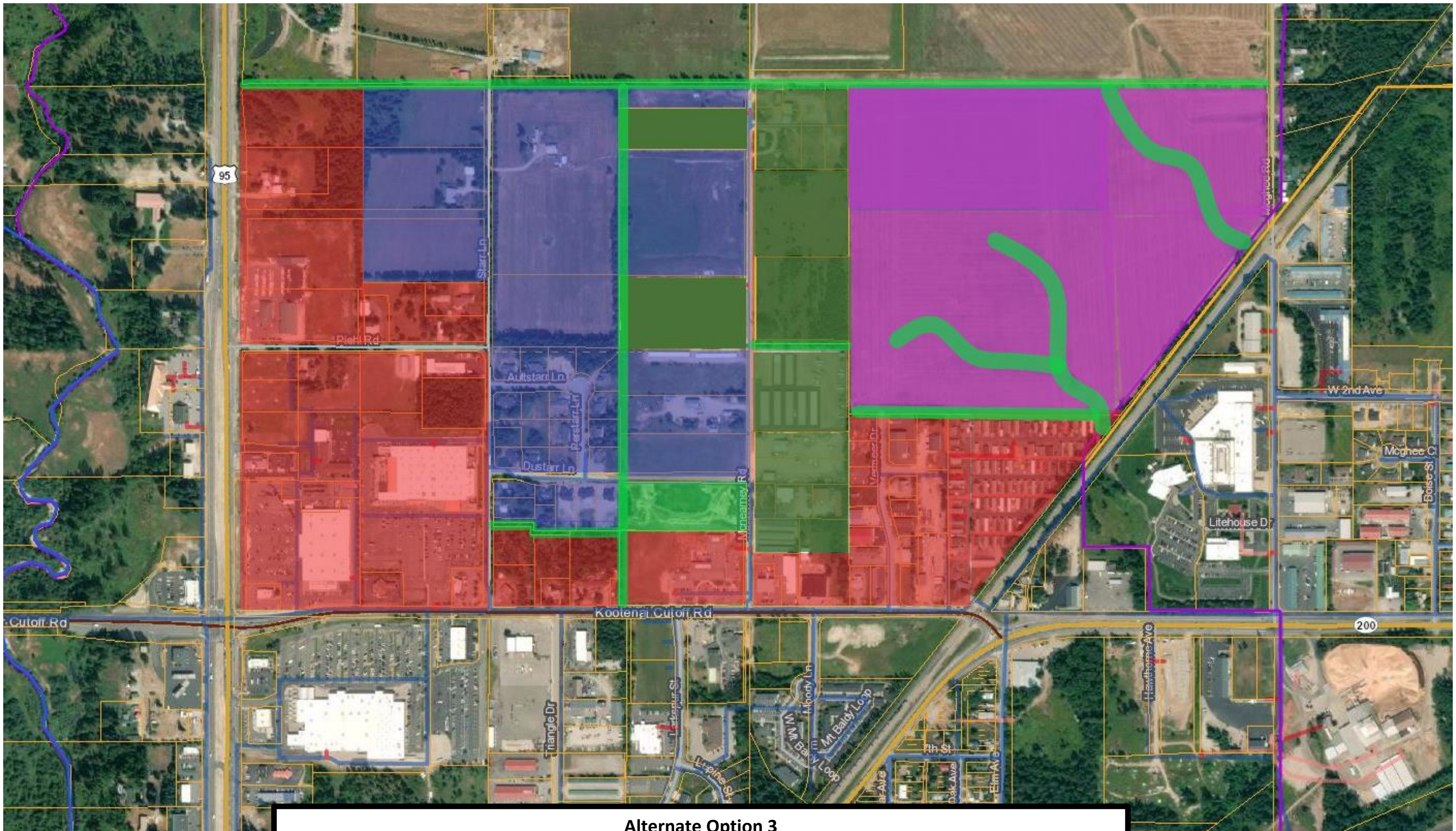
Alternate Option 1

Changes include: McNearney Park (Commercial to Recreation), Bailey (Residential/Industrial to all Residential), Independent Highway (Residential/Industrial to all Industrial) and Hutton/Rickard (Residential/Industrial to all Residential)



Alternate Option 2

Changes include: McNearney Park (Commercial to Recreation), Bailey (Residential/Industrial to all Residential), Independent Highway (Residential/Industrial to all Industrial), Hutton/Rickard (Residential/Industrial to all Residential) and modifies the McGhee site (Increases the Industrial space, decreases the Residential area and adds Rural along McGhee road)



Alternate Option 3

Changes include: McNearney Park (Commercial to Recreation), Bailey (Residential/Industrial to all Residential), Independent Highway (Residential/Industrial to all Industrial), Hutton/Rickard (Residential/Industrial to all Residential) and reverts the McGhee site back to rural