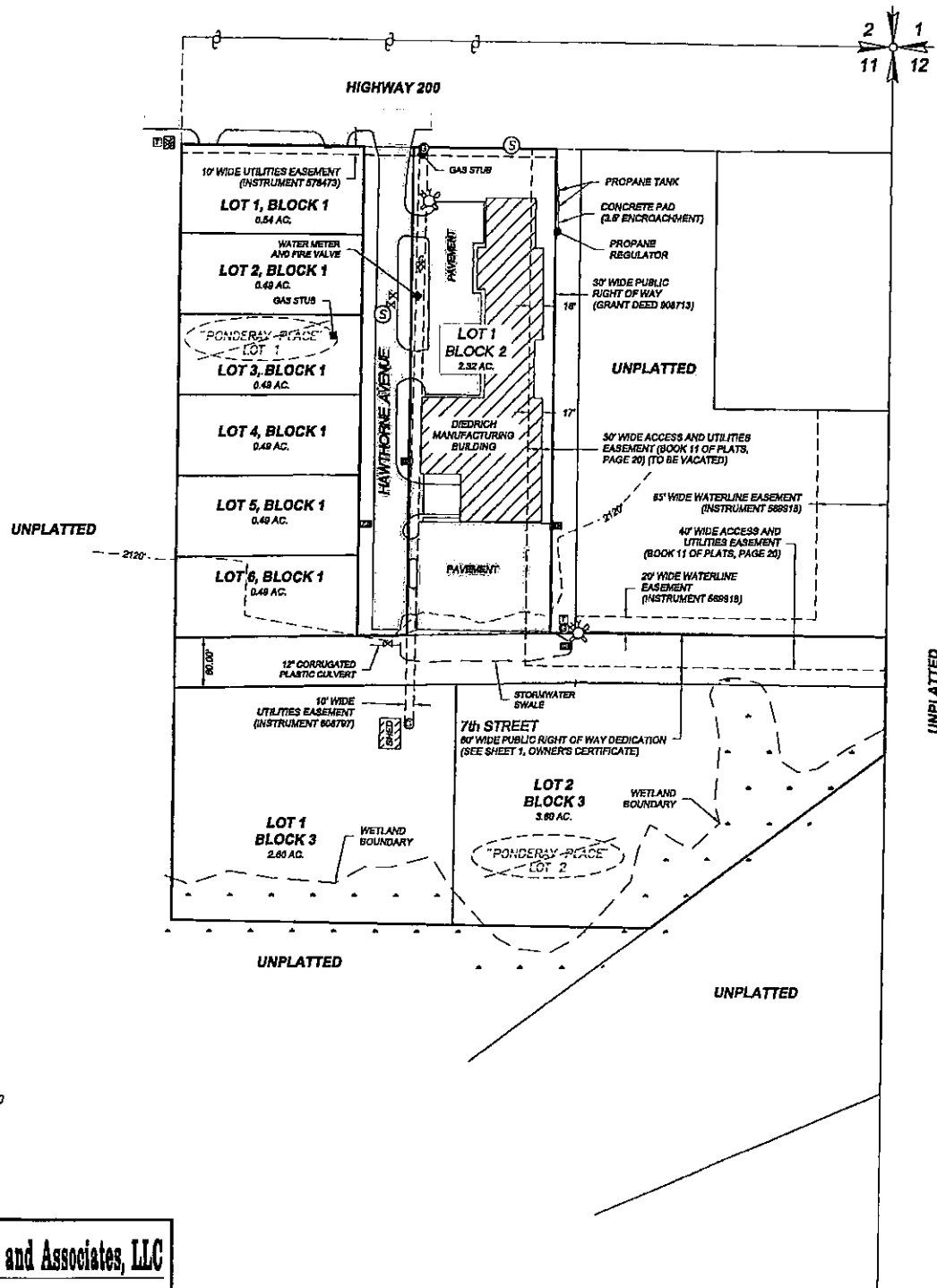


LEW'S INDUSTRIAL PARK PRELIMINARY PLAT

SECTION 11, TWP. 57N., RNG. 2W.,
BOISE MERIDIAN, CITY OF PONDERAY,
BONNER COUNTY, IDAHO



LEGEND

- ⊙ EXISTING SEWER MANHOLE
- ⊕ EXISTING FIRE HYDRANT
- ⊗ EXISTING WATER VALVE
- ⊠ EXISTING CATCH BASIN
- ⊔ EXISTING POWER POLE
- ⊞ EXISTING TELEPHONE RISER
- ⊚ EXISTING TELEPHONE JUNCTION BOX
- ⊛ EXISTING GAS MARKER
- ⊜ EXISTING GAS VALVE

EXISTING UTILITIES

S.11, T.57N., R.2W., B.M. 	PLAT NAME: LEW'S INDUSTRIAL PARK	DATE: 8-19-2020
	580 W. CANFIELD AVE., STE. 200 COEUR D'ALENE, IDAHO 83815 (208) 714-4544 WWW.SAWTOOTHLS.COM	SCALE: 1"=100' DRAWN BY: LEMCMA CHECKED BY: MWD/MET PROJ. NO.: 220007 CAD FILE: SREPLN/PLAT.DWG SHT. 4 OF 5

James A. Sewell and Associates, LLC
 1319 NORTH DIVISION AVENUE
 SANDPOINT, IDAHO 83864, (208) 263-4160