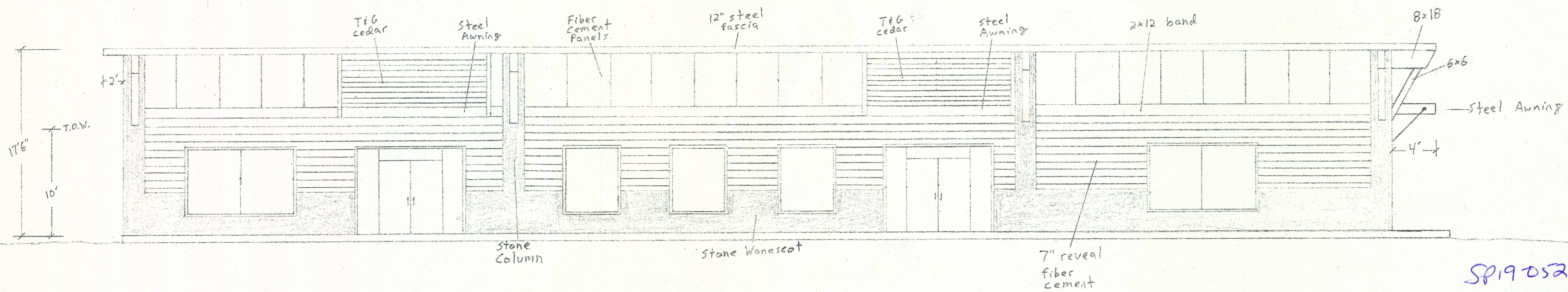
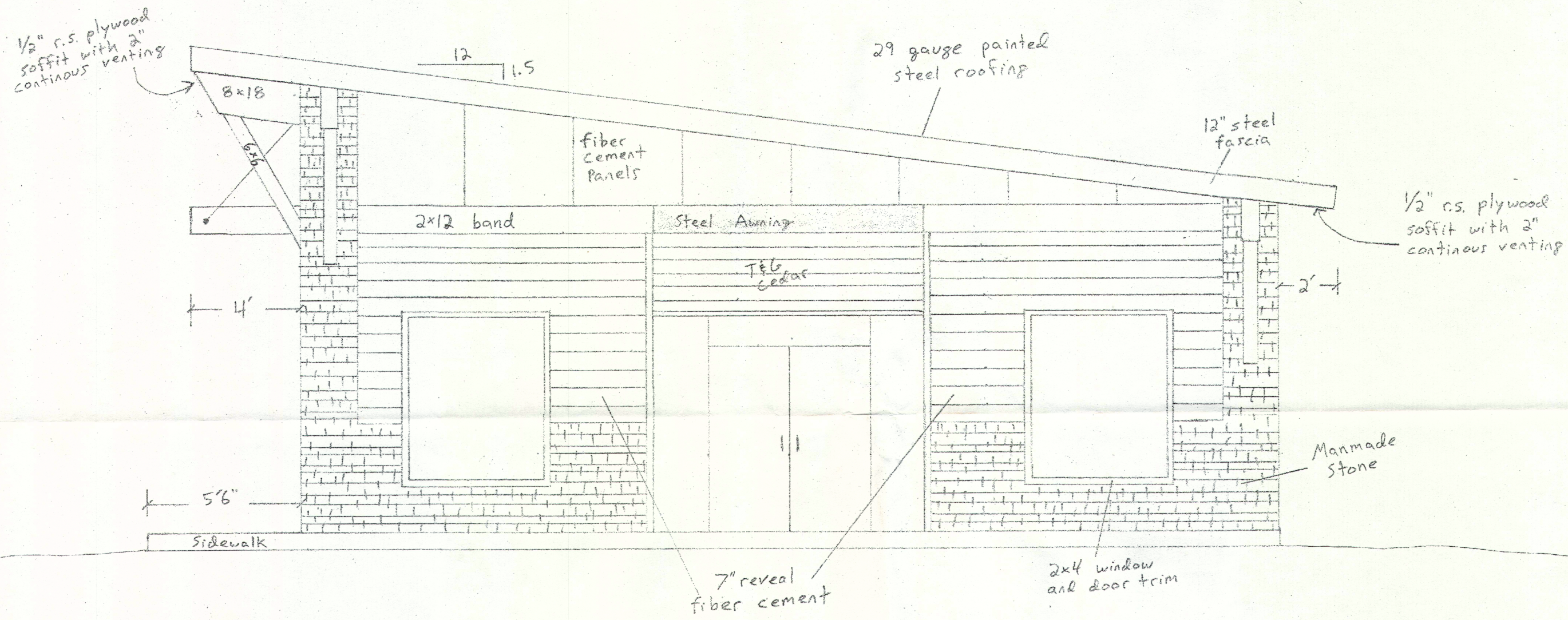


Vermeer

1/8" = 1'

SP19052
RECEIVED
 JUL 30 2019
 PLANNING OFFICE
 CITY OF PONDERAY

South Elevation
 $\frac{1}{4}'' = 1'$



West Elevation
 $\frac{1}{8}'' = 1'$

SP19052
RECEIVED
 JUL 30 2019
 PLANNING OFFICE
 CITY OF PONDERAY