

TUCKER TAYLOR, LLC

SCHWEITZER VIEW BUSINESS PARK: LOT 1A IMPROVEMENTS

SEC. 11, T. 57N, R. 2W W.M.
BONNER COUNTY, ID



Know what's below.
Call before you dig.

OFFICIALS

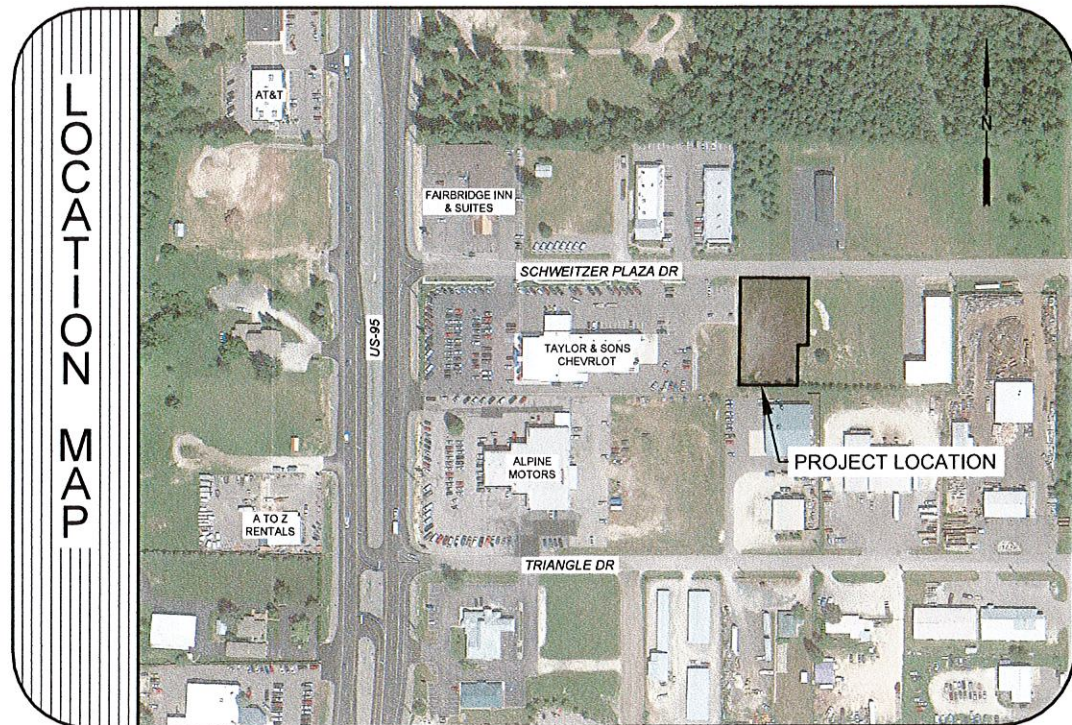
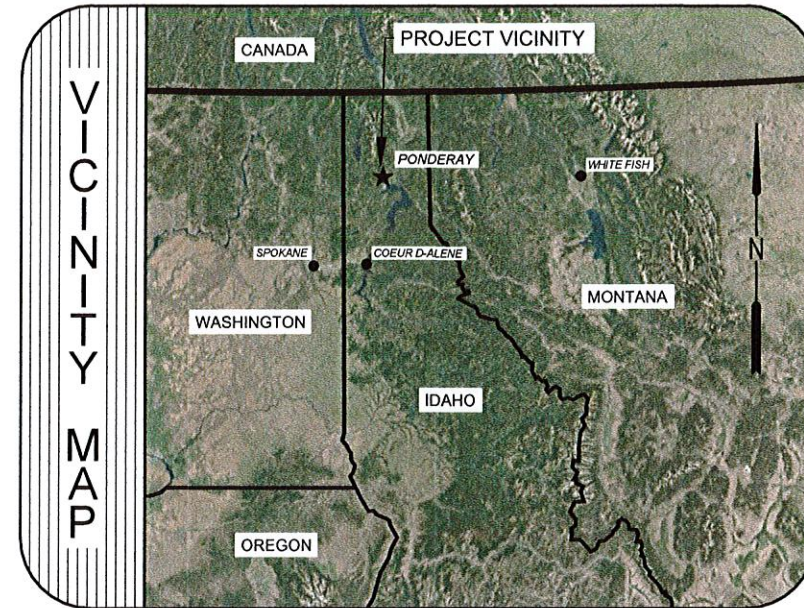
CITY OF PONDERAY

MAYOR: STEVE GEIGER

COUNCIL PRESIDENT: GARY KUNZEMAN

COUNCIL MEMBERS: KATHY OSBORNE
BRENDA THOMPSON
PHIL MCNEARNEY

PLANNING DIRECTOR: ERIK BRUBAKER



SHEET INDEX

DWG	SHEET	TITLE
G-01	1	COVER
CP-01	2	SITE PLAN
CP-02	3	PROFILE VIEW

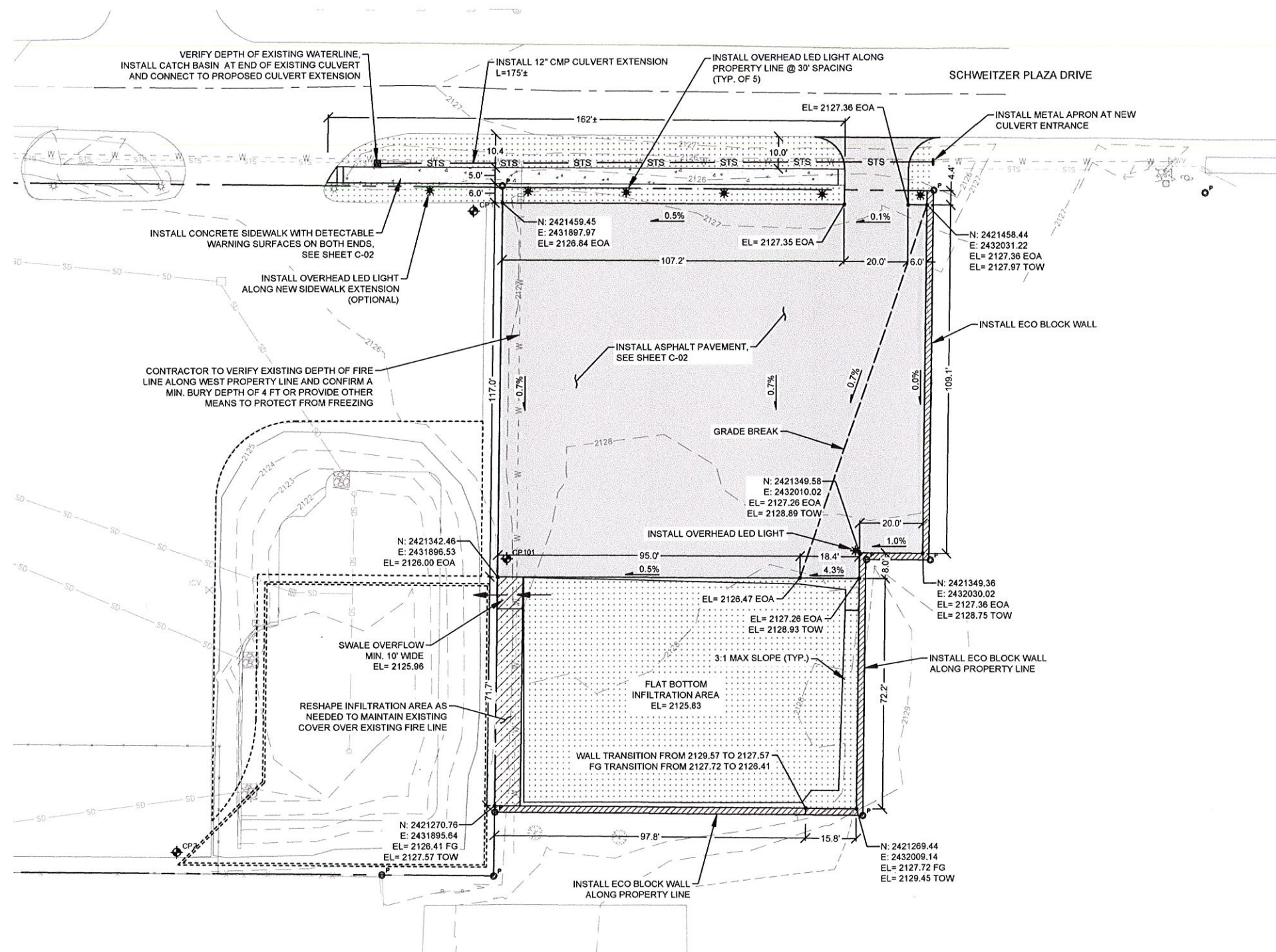
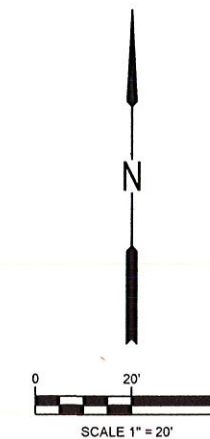
RECEIVED
JUN 14 2019
PLANNING OFFICE
CITY OF PONDERAY

REUSE OF DOCUMENTS THIS DRAWING, AND THE DESIGNS INCORPORATED HEREIN, AS AN INSTRUMENT OF PROFESSIONAL SERVICE, IS THE PROPERTY OF CENTURY WEST ENGINEERING CORPORATION, AND IS NOT TO BE USED, IN WHOLE OR IN PART, FOR ANY OTHER PROJECT WITHOUT THE WRITTEN CONSENT OF CENTURY WEST ENGINEERING CORPORATION. © CENTURY WEST ENGINEERING CORPORATION	Digitally signed Date: 2019.06.14 13:15:23 -07'00'	VERIFY SCALES BAR IS ONE INCH ON ORIGINAL DRAWING. 0" = 1" IF NOT ONE INCH ON THIS SHEET, ADJUST SCALES ACCORDINGLY.	NO. DATE BY APPR REVISIONS	 SPOKANE OFFICE 11707 E. MONTGOMERY DRIVE SPOKANE VALLEY, WA 99206 509.838.3810 509.824.0355 FAX	DESIGNED BY: R.J.L. DRAWN BY: A.J.F. CHECKED BY: R.J.L. SCALE: N.T.S.	TUCKER TAYLOR, LLC SCHWEITZER VIEW BUSINESS PARK LOT 1A IMPROVEMENTS COVER	DRAWING NO. G-01 SHEET NO. 1 OF 3
			DATE: 06/14/2019 PROJECT NO: 51008.001.02				



Know what's below.
Call before you dig.

CONTROL POINT DATA				
CONTROL POINT	NORTHING	EASTING	ELEVATION	DESCRIPTION
CP 101	2421348.15	2431899.42	2127.11	CP PK
CP 1	2421456.89	2431889.00	2126.67	CP PK
CP 2	2421256.55	2431796.12	2125.29	CP PK



SURFACE DATA

LOT AREA =	24,881 SF
PROPOSED ASPHALT SURFACE =	15,531 SF
ECO BLOCK AREA =	659 SF
BOTTOM OF SWALE AREA =	6,879 SF
RESERVED GREEN SPACE =	8,691
% OF GREEN SPACE =	34.9%

NOTES

1. SIDEWALK CROSS SLOPE SHALL NOT EXCEED 1%.
2. SCORE SIDEWALK AT INTERVALS NOT TO EXCEED 5 FT SPACING.
3. INSTALL 1/2" PREFORMED BITUMINOUS JOINTS AT 20 FT INTERVALS.
4. ALL MATERIALS AND CONSTRUCTION PER ISPPC STANDARDS.
5. CONTRACTOR SHALL PRESERVE AND PROTECT ALL PROPERTY PINS.
6. CONTRACTOR SHALL RETAIN AND PROTECT ALL UTILITIES.
7. CULVERT EXTENSION SHALL MATCH EXISTING SIZE AND MATERIALS.

ABBREVIATIONS

- CP - CONTROL POINT
- EL - ELEVATION
- EOA - EDGE OF ASPHALT
- FG - FINISH GRADE
- TOW - TOP OF WALL

PROPOSED LEGEND

- ASPHALT
- CONCRETE
- GRASS
- WALL (ECO BLOCKS)
- CULVERT
- CATCH BASIN
- LIGHT FIXTURE
- EXISTING PROPERTY PIN

REUSE OF DOCUMENTS

THIS DRAWING, AND THE DESIGNS INCORPORATED HEREIN, AS AN INSTRUMENT OF PROFESSIONAL SERVICE, IS THE PROPERTY OF CENTURY WEST ENGINEERING CORPORATION, AND IS NOT TO BE USED, IN WHOLE OR IN PART, FOR ANY OTHER PROJECT WITHOUT THE WRITTEN CONSENT OF CENTURY WEST ENGINEERING CORPORATION.

Digitally signed by Ryan Luttmann Date: 2019.06.14 13:14:50-07'00'

VERIFY SCALES
BAR IS ONE INCH ON ORIGINAL DRAWING.
IF NOT ONE INCH ON THIS SHEET, ADJUST SCALES ACCORDINGLY.

NO.	DATE	BY	APPR	REVISIONS



SPOKANE OFFICE
11707 E. MONTGOMERY DRIVE
SPOKANE VALLEY, WA 99206
509.838.3810
509.824.0355 FAX

DATE: 06/14/2019 PROJECT NO: 51008.001.02

DESIGNED BY: R.J.L.
DRAWN BY: A.J.F.
CHECKED BY: R.J.L.
SCALE: 1" = 20'

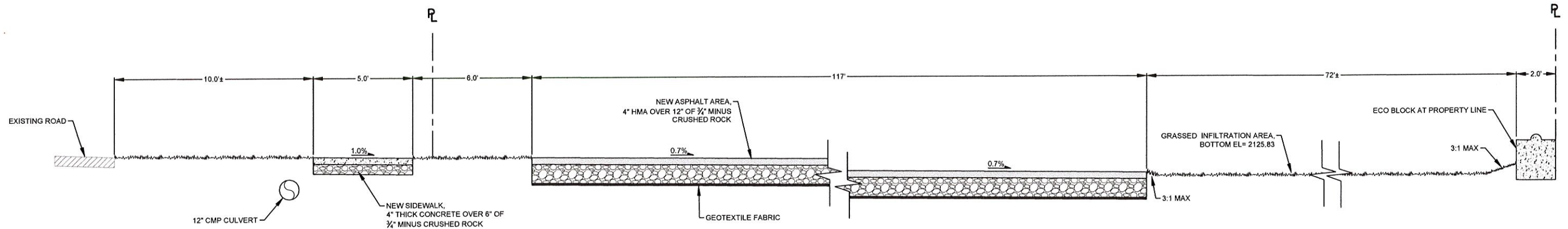
TUCKER TAYLOR, LLC
SCHWEITZER VIEW BUSINESS PARK
LOT 1A IMPROVEMENTS

SITE PLAN

DRAWING NO. C-01
SHEET NO. 2 OF 3



Know what's below.
Call before you dig.



NOTES

1. SIDEWALK CROSS SLOPE SHALL NOT EXCEED 1%.
2. SCORE SIDEWALK AT INTERVALS NOT TO EXCEED 5 FT SPACING.
3. INSTALL 1/2\" PREFORMED BITUMINOUS JOINTS AT 20 FT INTERVALS.
4. ALL MATERIALS AND CONSTRUCTION PER ISPPWC STANDARDS.
5. CONTRACTOR SHALL PRESERVE AND PROTECT ALL PROPERTY PINS.
6. CONTRACTOR SHALL RETAIN AND PROTECT ALL UTILITIES.
7. CULVERT EXTENSION SHALL MATCH EXISTING SIZE AND MATERIALS.

REUSE OF DOCUMENTS

THIS DRAWING, AND THE DESIGNS INCORPORATED HEREIN, AS AN INSTRUMENT OF PROFESSIONAL SERVICE, IS THE PROPERTY OF CENTURY WEST ENGINEERING CORPORATION, AND IS NOT TO BE USED, IN WHOLE OR IN PART, FOR ANY OTHER PROJECT WITHOUT THE WRITTEN CONSENT OF CENTURY WEST ENGINEERING CORPORATION.

© CENTURY WEST ENGINEERING CORPORATION

Digitally signed
by Ryan
Luttmann
Date:
2019.06.14
13:14:05-07'00'

VERIFY SCALES
BAR IS ONE INCH ON ORIGINAL DRAWING.
0" = 1"
IF NOT ONE INCH ON THIS SHEET, ADJUST SCALES ACCORDINGLY.

NO.	DATE	BY	APPR	REVISIONS



SPOKANE OFFICE
11707 E. MONTGOMERY DRIVE
SPOKANE VALLEY, WA 99206
509.838.3810
509.624.0355 FAX

DATE: 06/14/2019 PROJECT NO: 51008.001.02

DESIGNED BY: R.J.L.
DRAWN BY: A.J.F.
CHECKED BY: R.J.L.
SCALE: N.T.S.

TUCKER TAYLOR, LLC
SCHWEITZER VIEW BUSINESS PARK
LOT 1A IMPROVEMENTS

PROFILE VIEW

DRAWING NO. C-02
SHEET NO. 3 OF 3