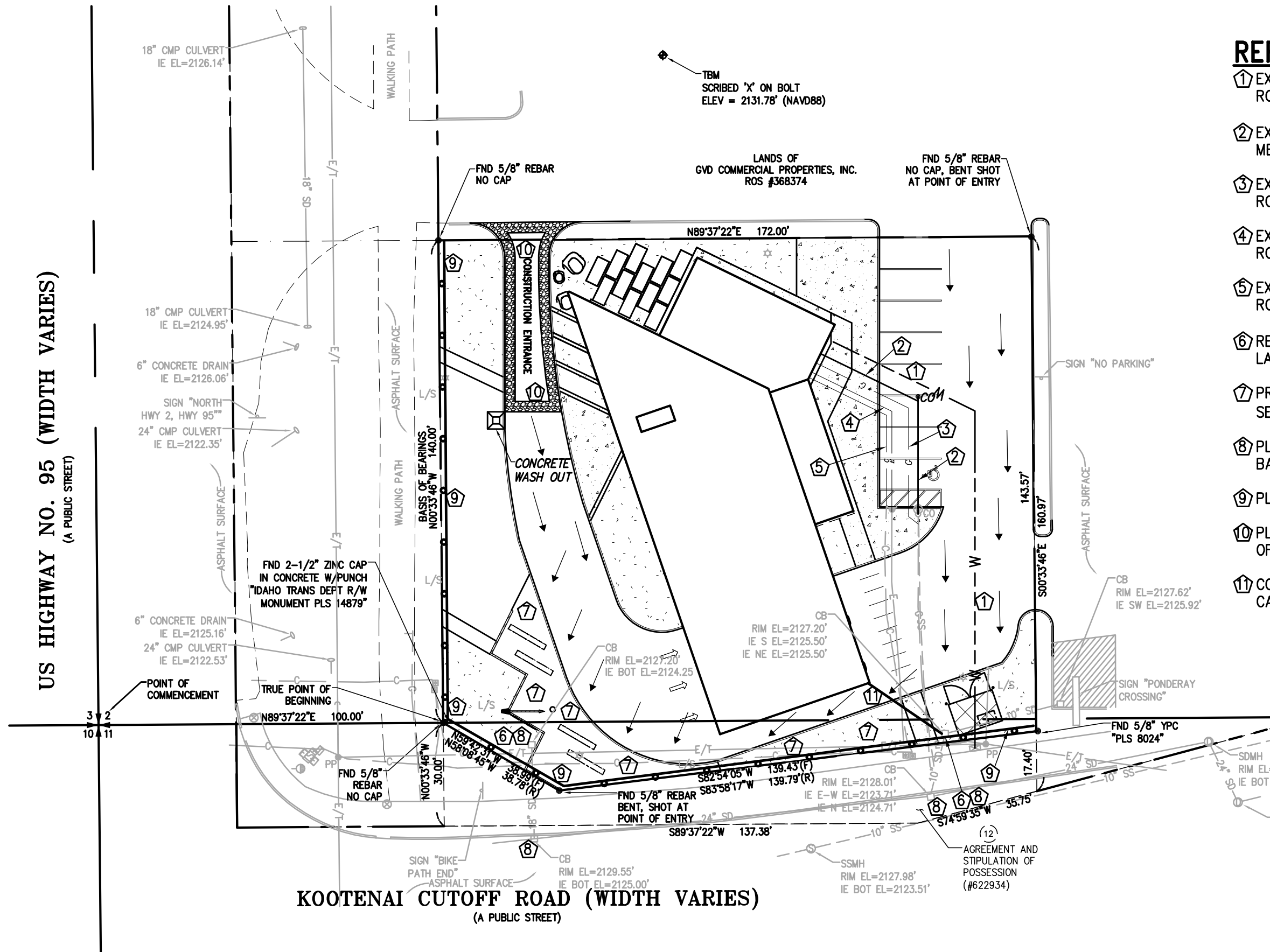
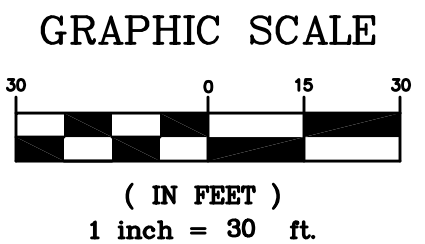


US HIGHWAY NO. 95 (WIDTH VARIES)
(A PUBLIC STREET)



REFERENCE NOTES:

- ① EXTEND EXISTING 1" WATER SERVICE TO MECHANICAL ROOM.
- ② EXTEND EXISTING 4" SANITARY SEWER SERVICE TO MECHANICAL ROOM.
- ③ EXTEND EXISTING NATURAL GAS SERVICE TO MECHANICAL ROOM.
- ④ EXTEND EXISTING ELECTRICAL SERVICE TO MECHANICAL ROOM.
- ⑤ EXTEND EXISTING TELECOM SERVICE TO MECHANICAL ROOM.
- ⑥ RETAIN EXISTING CATCH BASIN. SET RIM 6" ABOVE LANDSCAPE AREA.
- ⑦ PROVIDE STORM WATER TREATMENT IN LANDSCAPE AREA. SET LANDSCAPE AREA 9" BELOW PAVEMENT GRADE.
- ⑧ PLACE FILTER FABRIC UNDER GRATE OF EXISTING CATCH BASIN PRIOR TO START OF CONSTRUCTION.
- ⑨ PLACE SILT FENCE PRIOR TO START OF CONSTRUCTION.
- ⑩ PLACE ROCK CONSTRUCTION ENTRANCE PRIOR TO START OF CONSTRUCTION.
- ⑪ CONNECT BUILDING ROOF DRAIN SYSTEM TO EXISTING CATCH BASIN.



STCU
BONNER COUNTY BRANCH
10/8/18

EDCI
ENGINEERS
707 W. 2ND AVENUE
SPOKANE, WASHINGTON 99201
PHONE: (509) 455-4448 • FAX: (509) 455-7492
WEBSITE: www.edci-engineers.com
CIVIL / STRUCTURAL

SITE PLAN

© Copyright 10/2018 D'Amato Conversano Inc. All Rights Reserved. This document, and the ideas and designs may not be reused, in whole or in part, without written permission from D'Amato Conversano Inc.